

Arcserve® Backup for Windows

Enterprise Option for SAP R/3 for Oracle Guide
r16.5

arcserve®

This Documentation, which includes embedded help systems and electronically distributed materials, (hereinafter referred to as the "Documentation") is for your informational purposes only and is subject to change or withdrawal by Arcserve at any time.

This Documentation may not be copied, transferred, reproduced, disclosed, modified or duplicated, in whole or in part, without the prior written consent of Arcserve. This Documentation is confidential and proprietary information of Arcserve and may not be disclosed by you or used for any purpose other than as may be permitted in (i) a separate agreement between you and Arcserve governing your use of the Arcserve software to which the Documentation relates; or (ii) a separate confidentiality agreement between you and Arcserve.

Notwithstanding the foregoing, if you are a licensed user of the software product(s) addressed in the Documentation, you may print or otherwise make available a reasonable number of copies of the Documentation for internal use by you and your employees in connection with that software, provided that all Arcserve copyright notices and legends are affixed to each reproduced copy.

The right to print or otherwise make available copies of the Documentation is limited to the period during which the applicable license for such software remains in full force and effect. Should the license terminate for any reason, it is your responsibility to certify in writing to Arcserve that all copies and partial copies of the Documentation have been returned to Arcserve or destroyed.

TO THE EXTENT PERMITTED BY APPLICABLE LAW, ARCSERVE PROVIDES THIS DOCUMENTATION "AS IS" WITHOUT WARRANTY OF ANY KIND, INCLUDING WITHOUT LIMITATION, ANY IMPLIED WARRANTIES OF MERCHANTABILITY, FITNESS FOR A PARTICULAR PURPOSE, OR NONINFRINGEMENT. IN NO EVENT WILL ARCSERVE BE LIABLE TO YOU OR ANY THIRD PARTY FOR ANY LOSS OR DAMAGE, DIRECT OR INDIRECT, FROM THE USE OF THIS DOCUMENTATION, INCLUDING WITHOUT LIMITATION, LOST PROFITS, LOST INVESTMENT, BUSINESS INTERRUPTION, GOODWILL, OR LOST DATA, EVEN IF ARCSERVE IS EXPRESSLY ADVISED IN ADVANCE OF THE POSSIBILITY OF SUCH LOSS OR DAMAGE.

The use of any software product referenced in the Documentation is governed by the applicable license agreement and such license agreement is not modified in any way by the terms of this notice.

The manufacturer of this Documentation is Arcserve.

Provided with "Restricted Rights." Use, duplication or disclosure by the United States Government is subject to the restrictions set forth in FAR Sections 12.212, 52.227-14, and 52.227-19(c)(1) - (2) and DFARS Section 252.227-7014(b)(3), as applicable, or their successors.

© 2015 Arcserve, including its affiliates and subsidiaries. All rights reserved. Any third party trademarks or copyrights are the property of their respective owners.

Arcserve Product References

This document references the following Arcserve products:

- Arcserve® Backup
- Arcserve® Unified Data Protection
- Arcserve® Unified Data Protection Agent for Windows
- Arcserve® Unified Data Protection Agent for Linux
- Arcserve® Replication and High Availability

Contact Arcserve

The Arcserve Support team offers a rich set of resources for resolving your technical issues and provides easy access to important product information.

<https://www.arcserve.com/support>

With Arcserve Support:

- You can get in direct touch with the same library of information that is shared internally by our Arcserve Support experts. This site provides you with access to our knowledge-base (KB) documents. From here you easily search for and find the product-related KB articles which contain field-tested solutions for many top issues and common problems.
- You can use our Live Chat link to instantly launch a real-time conversation between you and the Arcserve Support team. With Live Chat, you can get immediate answers to your concerns and questions, while still maintaining access to the product.
- You can participate in the Arcserve Global User Community to ask and answer questions, share tips and tricks, discuss best practices and participate in conversations with your peers.
- You can open a support ticket. By opening a support ticket online, you can expect a callback from one of our experts in the product area you are inquiring about.

You can access other helpful resources appropriate for your Arcserve product.

Documentation Changes

The following documentation updates have been made since the last release of this documentation:

- Rebranded to CA Technologies.
- Updated to include user feedback, enhancements, corrections, and other minor changes to help improve the usability and understanding of the product or the documentation itself.

Contents

Chapter 1: Introducing the Option	9
Enterprise Option for SAP R/3 for Oracle	9
Architectural Overview	10
Option Integration with SAP R/3 for Oracle	11
How SAPDBA Backs Up Data	12
How SAPDBA Restores Data	13
Option Integration with Arcserve Backup	13
How Arcserve Backup Backs Up Data	14
How Arcserve Backup Restores Data	15
Option Integration with the Oracle Recovery Manager	16
How Recovery Manager Backs Up Data	17
How Recovery Manager Restores Data	18
Chapter 2: Installing the Option	19
Installation Prerequisites	19
Hardware and Software Requirements	19
Install the Option	20
Configure the Agent for Oracle	20
Enable Submit Job from RMAN Console	21
Configure BACKINT Interface of Enterprise Option for SAP R/3	22
Configure Parameter File Settings	23
Configure the init<SID>.sap File	25
Create ACLs (Access Control Lists)	25
Check the Arcserve Universal Agent Service Status	26
Backup and Restore Limitations	27
Chapter 3: Using the Option with Agent for Oracle	29
Option with Agent for Oracle	29
Online Redo Log Files	29
Multiple Databases	30
Configure a Backup Session for Multiple Databases	30
Database Backup	31
Back Up Online Databases with Arcserve Backup	32
Back Up Offline Databases with Arcserve Backup	34
Back Up in an Oracle Fail Safe Environment	35
Oracle Recovery Manager Backup	37

Database Restore with the Option	39
Best Practices for Restoring Data	40
Oracle Recovery Manager Restore	44
Restore to a Particular Point in Time	45
Archive Logs Restore	45
Database Recovery	46
Recover Old Databases	47
Recover Complete Databases with Backed Up Control Files	48
Recover Old Tablespaces or Data Files	49
Recover From Offline Full Backups	50

Chapter 4: Using the Option with SAPDBA for Oracle **51**

SAPDBA	51
How SAPDBA Works	52
Database Backup Using SAPDBA and BR* Tools	52
Restore and Recover Using SAPDBA	57
The BACKINT Job Status	57

Chapter 5: Using the Option with BR*Tools for Oracle **59**

BR*Tools	59
Configure BR*Tools	59
Profile File	60
Environment Variables	60
Database Backup Using the BR*Tools Command	60
Online Backup of a Complete Database	61
Online Backup of Control File	61
Offline Backup of Tablespace	62
Save Offline Redo Log Files	62
Copy and Delete Saved Offline Redo Log Files and Save New Redo Log Files	62
Database Restore Using BR*Tool Commands	63
Restore Complete Database	63
Restore Control Files	64
Restore Offline Redo Log Files	64
Partial Restore to a Different Directory	65
Using BACKINT Command Line for Querying Backup Information	66

Appendix A: Best Practices **67**

Recommended Backup Procedures	67
Backup and Recovery Strategies	68
Test Environment	68

Log File Protection.....	68
Backups After Organizational Changes	69

Appendix B: Troubleshooting **71**

Debug Methods.....	71
Enable Debugging for the Backup Option Integration Module.....	72
Job Status Information	73
BACKINT Job Status	74
Using RMAN Command to Backup, Restore, and Recover Archived Logs	74
Unable to Access Archived Logs in Oracle Cluster Environment.....	76
ORA-12546: TNS: permission denied	77

Appendix C: Disaster Recovery Scenarios **79**

Scenarios for Restoring to the Original Windows Server	79
Recover the ORCL Database.....	80
Recover the ORA Database	81
Scenarios for Restoring to an Alternate Server.....	82
Restore to a Server that Supports Exact Directory Structures.....	83
Restore to an Alternate Server that Cannot Support Exact Directory Structures.....	84
Restore Data to an Alternative Server Using the SAP BACKINT Agent.....	85

Appendix D: Sample util_par_file and Parameter Definitions **91**

Description for a Sample Backup Option Integration Module (BACKINT).....	91
Sample File	91
Parameter Definitions	93

Glossary **95**

Index **97**

Chapter 1: Introducing the Option

This section contains the following topics:

[Enterprise Option for SAP R/3 for Oracle](#) (see page 9)

[Architectural Overview](#) (see page 10)

[Option Integration with SAP R/3 for Oracle](#) (see page 11)

[Option Integration with Arcserve Backup](#) (see page 13)

[Option Integration with the Oracle Recovery Manager](#) (see page 16)

Enterprise Option for SAP R/3 for Oracle

Among the options Arcserve Backup offers is the Arcserve Backup Enterprise Option for SAP R/3 for Oracle (the option). This option helps you manage Oracle databases in your SAP R/3 for Oracle environment by letting you remotely manage backups, schedule your backups, and back up to a wide array of media storage devices.

The option supports backup and restore operations launched from the Arcserve Backup user interface or from the following user interfaces:

- BR*Tools for Oracle
- Oracle Recovery Manager

Using the option, you can back up and restore the following Oracle database objects:

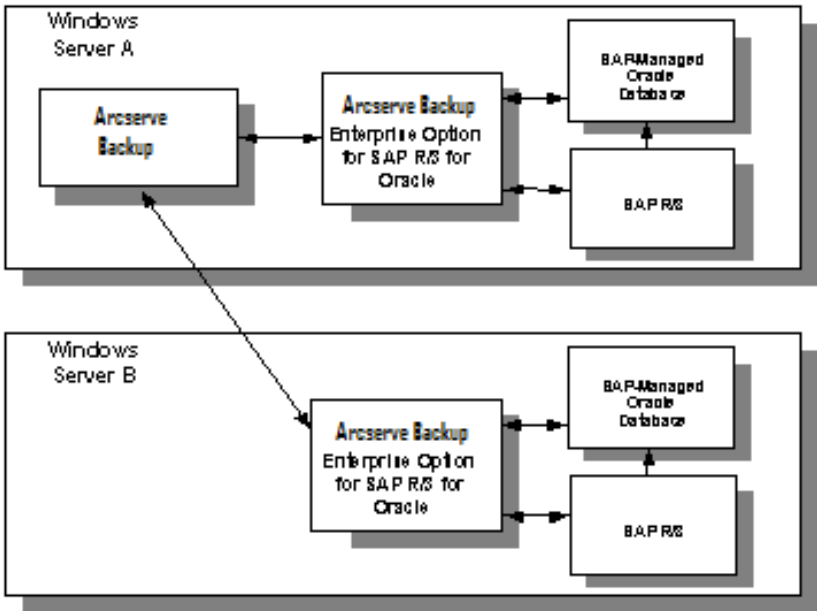
- Databases
- Tablespaces
- Archived log files
- Control files

The option handles all communications between Arcserve Backup, SAP R/3 for Oracle, and the Oracle server application while data is being backed up and restored. This includes preparing, retrieving, and processing the data sent back and forth across the network.

Architectural Overview

You can install Arcserve Backup on the same computer as the option and the Oracle database, or on a separate computer. If you install Arcserve Backup on the same computer, then communication with the option is local. If you install it on a separate computer, Arcserve Backup communicates with the option remotely over a LAN or WAN.

An Oracle *instance* is a logical database server environment. You can create an Oracle database within an Oracle instance on your database server. The option provides services that allow Arcserve Backup to back up and restore a SAP-managed Oracle database associated with the option. The networking capabilities of Arcserve Backup enable the option to be located on any Windows server on which an Oracle database is located. You must install one option on each database server that you want Arcserve Backup to manage.



Note: Staging is not supported when you back up the database using SAPDBA or BR*Tools.

Option Integration with SAP R/3 for Oracle

The Enterprise Option for SAP R/3 for Oracle lets you to back up and restore SAP-managed Oracle databases by integrating with BR*Tools for Oracle, the database administration tool developed by SAP for managing Oracle databases. The option's backup option integration module implements this integration provided by Arcserve. This module is installed when the option is installed.

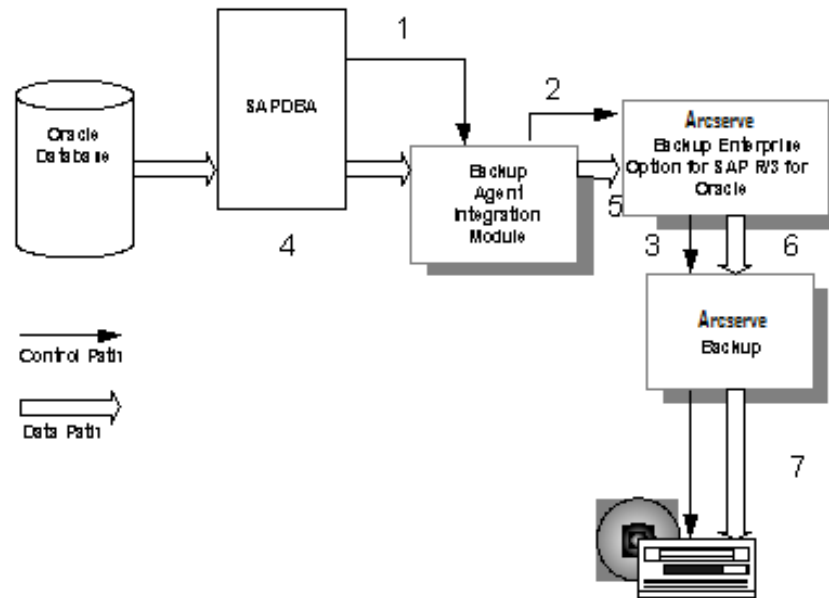
The backup option integration module links Arcserve Backup to SAPDBA for Oracle. The SAPDBA module manages the activity within the Oracle database and the backup option integration module manages the backup, restore, and inquiry requests in conjunction with Arcserve Backup. The backup option integration module is referred to as both BACKINT and as BC-BRI in SAP documentation.

For the option to be able to use SAPDBA, the SAP R/3 for Oracle application must be running. When SAPDBA starts a backup or restore job, the backup option integration module is automatically invoked.

How SAPDBA Backs Up Data

The option performs backups with SAPDBA using the following steps:

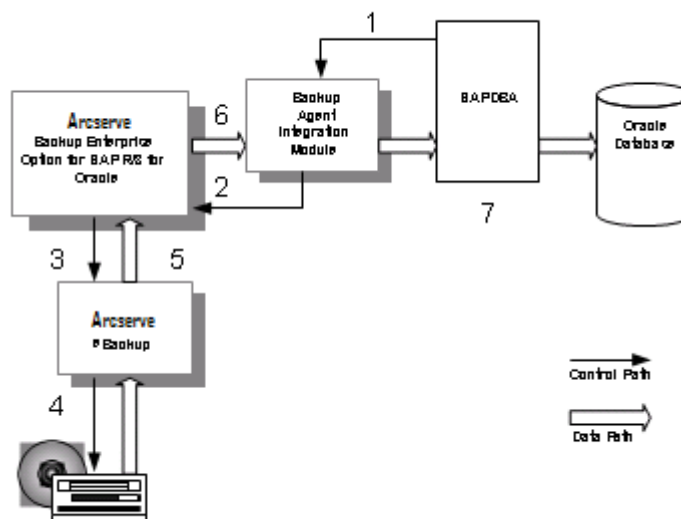
1. A user issues a backup command from the SAPDBA user interface.
SAPDBA directs the request to the backup option integration module.
2. The backup option integration module receives the backup request and passes it to the option.
3. The option passes the backup request to Arcserve Backup.
4. SAPDBA begins copying backup data from the database and passes it to the backup option integration module.
5. The backup option integration module passes the backup data to the option.
6. The option passes the backup data to Arcserve Backup.
7. Arcserve Backup saves the data to a storage medium.



How SAPDBA Restores Data

The option restores Oracle objects with SAPDBA using the following steps:

1. A user issues a restore command from the SAPDBA user interface.
SAPDBA directs the request to the backup option integration module.
2. The backup option integration module receives the restore request and passes it to the option.
3. The option passes the restore request to Arcserve Backup.
4. Arcserve Backup retrieves the data from a storage medium.
5. Arcserve Backup passes the restore data to the option.
6. The option passes the restore data to the backup option integration module.
7. SAPDBA restores the data to the database.



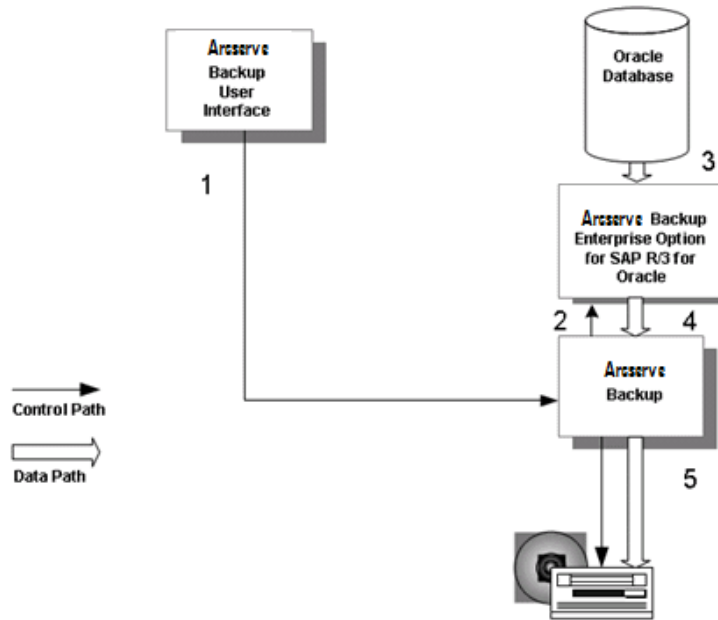
Option Integration with Arcserve Backup

You can use the option to perform backups and restores submitted from the Arcserve Backup user interface. The diagrams in the following sections outline the general interaction between the option and Arcserve Backup.

How Arcserve Backup Backs Up Data

The option performs backups with Arcserve Backup using the following steps:

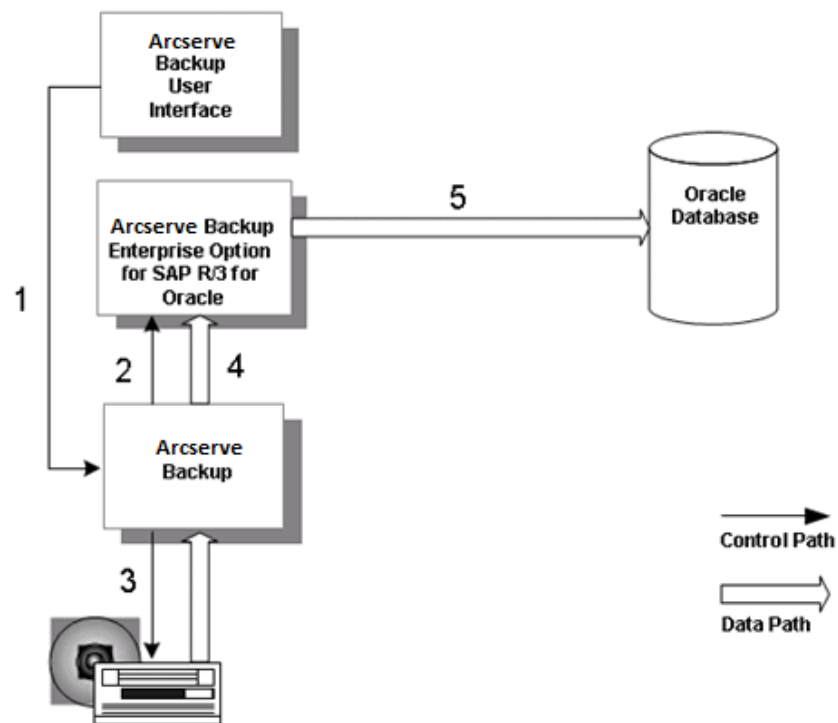
1. The user issues a backup command from the Arcserve Backup user interface.
2. Arcserve Backup receives the backup request and passes it to the option.
3. The option begins copying backup data from the database.
4. The option passes the backup data to Arcserve Backup.
5. Arcserve Backup saves the data to a storage medium.



How Arcserve Backup Restores Data

The option restores Oracle objects with Arcserve Backup using the following steps:

1. The user issues a restore command from the Arcserve Backup user interface.
2. Arcserve Backup informs the option of the restore request.
3. Arcserve Backup begins retrieving the data from storage.
4. Arcserve Backup passes the data to the option.
5. The option restores the data to the database.



Note: When you restore with Arcserve Backup, you can only restore data that was backed up with Arcserve Backup.

Option Integration with the Oracle Recovery Manager

During installation, you have the option of installing support for Oracle Recovery Manager (RMAN), an Oracle utility for backing up, restoring, and recovering Oracle databases. With support for Recovery Manager, you can submit backup and restore jobs to Arcserve Backup by connecting to RMAN at the command line, or through the Oracle Backup Manager user interface. In addition, you can write and execute your own Recovery Manager scripts.

If you choose to install Arcserve Backup support for Recovery Manager, you must run the Oracle agent configuration before you use Recovery Manager.

Note: For information about how to run this utility, see [Configure the Agent for Oracle](#) (see page 20).

After you install the Arcserve Backup Enterprise Option for SAP R/3 for Oracle, each time you initiate a backup or restore with Recovery Manager, the option transfers data between Arcserve Backup, the Oracle database, and the storage media.

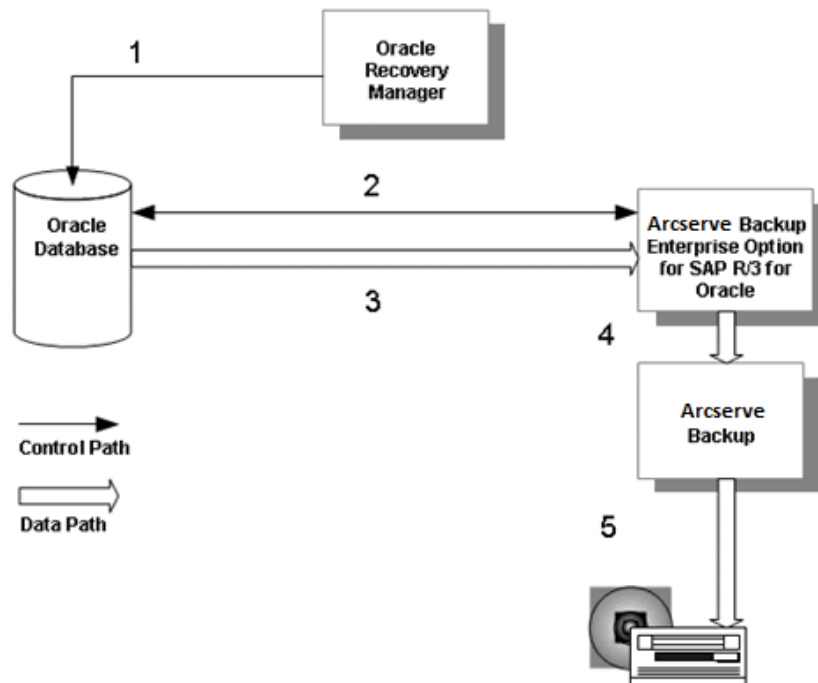
If you back up data using the Recovery Manager interface, you can only restore that data using the Recovery Manager interface. For information on how the Option works with the Agent for Oracle in RMAN mode, see *Agent for Oracle* guide.

Similarly, if you back up data using Arcserve Backup, you can only restore that data using Arcserve Backup. For information on how the Option works with the Agent for Oracle in File-based mode, see *Agent for Oracle* guide.

How Recovery Manager Backs Up Data

Initiate backup jobs from Oracle Recovery Manager using the following steps:

1. The user issues a backup request to the Oracle database from the Recovery Manager command line interface.
2. The database notifies the option of the backup request; the option requests transfer of backup data.
3. The database transfers the backup data to the option.
4. The option passes the backup data to Arcserve Backup.
5. Arcserve Backup saves the data to a storage medium.



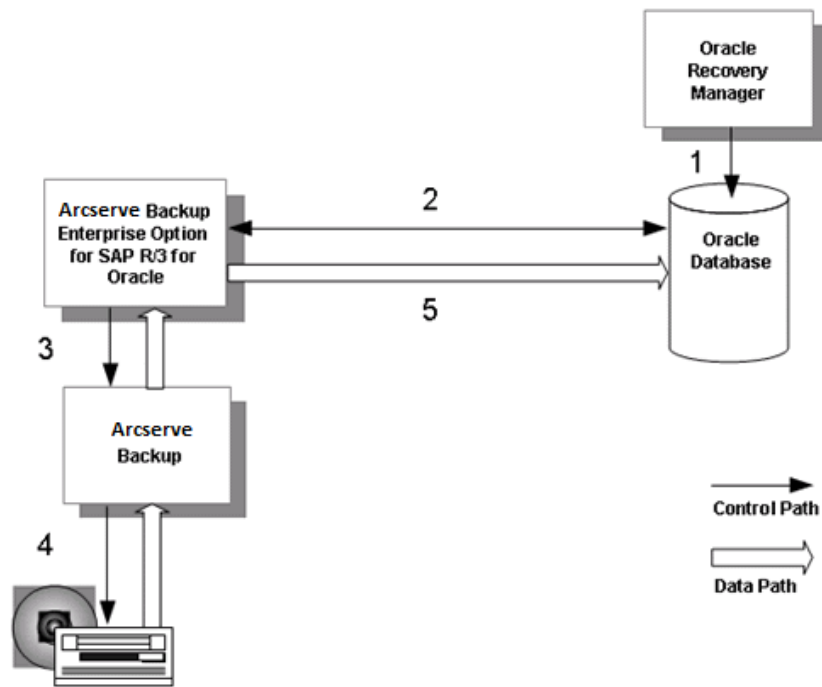
How Recovery Manager Restores Data

Initiate restore jobs from Oracle Recovery Manager using the following steps.

Note: When you restore with Recovery Manager, you can only restore with data that was backed up with Recovery Manager.

1. The user issues a restore request to the Oracle database from the Recovery Manager command line interface.
2. The database notifies the option of the restore request.
3. The option notifies Arcserve Backup of the restore request.
4. Arcserve Backup retrieves the data from a storage medium.
5. The option restores the Oracle database.

Note: For information about how the Option works with the Agent for Oracle in RMAN mode, see *Agent for Oracle* guide.



Chapter 2: Installing the Option

This chapter provides the information you need to install and configure the Enterprise Option for SAP R/3 for Oracle. The information in this chapter assumes you are familiar with the characteristics and requirements of the specified Windows operating systems in general, and with administrator responsibilities on those operating systems in particular.

This section contains the following topics:

[Installation Prerequisites](#) (see page 19)

[Hardware and Software Requirements](#) (see page 19)

[Install the Option](#) (see page 20)

[Configure the Agent for Oracle](#) (see page 20)

[Configure BACKINT Interface of Enterprise Option for SAP R/3](#) (see page 22)

[Backup and Restore Limitations](#) (see page 27)

Installation Prerequisites

Before installing the Enterprise Option for SAP R/3 for Oracle, verify the following prerequisites:

1. Your system meets the software requirements needed to install the option.

For a list of these requirements, see the *Arcserve Readme*.

2. You have the following applications installed and running on the computer on which you want to install the option:

- Oracle (9i and 10g)

Note: For more information on the supported Oracle versions, see the *Agent for Oracle* guide.

- SAPDBA for Oracle or BR*Tools for Oracle
- Oracle Recovery Manager

3. You have administrative privileges or the proper authority to install software on the computers where you will be installing the option.

Note: You can uninstall the Enterprise Option for SAP R/3 for Oracle using the Add/Remove programs option in Windows.

Hardware and Software Requirements

You can find hardware and software requirements for the Enterprise Option for SAP R/3 for Oracle in the *Readme* for this release.

Install the Option

Configure the Agent for Oracle

After you install the Agent for Oracle, the Oracle Agent Configuration dialog opens. You must configure the agent to perform the backup and restore jobs.

To configure the Agent for Oracle

1. From the Windows Start menu, click Start, Programs (or All Programs), CA, ARCserve Backup, and click Oracle Agent Configuration.

The Oracle Agent Configuration dialog opens.

Note: You can run the Oracle Agent Configuration tool as new Oracle instances are created.

2. Specify the necessary details to configure the agent. Some of the options include:
 - **Allow jobs to be submitted directly from the RMAN Console**--Lets you submit jobs from the RMAN console.
 - **Instance Name**--Auto detected. Ensure all instances are enabled that will be backed up.
 - **Username**--Enter the user name.
 - **Password**--Enter the password.
 - **Log File**--Lets you specify the location of the log files. By default, the log files reside in the Log subfolder under the Agent Installation directory.
 - **Debugging Level**--Provides four debugging levels (Level 1 to Level 4).

Important! If you are unable to set the debugging level option to the appropriate level, contact Technical Support.

More information:

[Enable Submit Job from RMAN Console](#) (see page 21)

Enable Submit Job from RMAN Console

The Arcserve Backup Agent for Oracle provides File-Based Mode backup and restore and RMAN Mode backup and restore. The RMAN Mode provides basic functionalities for RMAN. If you want to use advanced RMAN features, you can submit jobs using the RMAN Console.

To enable submit job from the RMAN console

1. Start the Oracle Agent Configuration tool.
2. Check the Allow jobs to be submitted directly from the RMAN Console option.

The Agent Host Information and the Server Information fields open.

Welcome to Oracle Agent Configuration

Please configure Oracle version and instance(s) that you want to protect.
Note: You must run Oracle Agent Configuration when you create new Oracle instances. ARCserve will NOT back-up unconfigured Oracle instances until you configure them.

Allow jobs to be submitted directly from the RMAN Console

Instance Name	Username	Password
<input checked="" type="checkbox"/> ORCL	sys	*****

Log File: C:\Program Files\CA\ARCserve Backup Agent for Oracle\Log ... Level 1

Agent Host Information
User Name: MTEST01-W35-15\Administrz
Password: *****

CA Arcserve Server Information
ServerName: MTEST01-W35-3
Account: caroot
Password: *****
Tape Name: *
Group Name: *

OK Cancel Apply Help

3. Enter details for the following parameters:
 - **Agent Host Information:**
 - **User name**--Enter the user name.
 - **Password**--Enter the password.
 - **Arcserve Server Information:**
 - **Server Name**--Enter the Arcserve server details to ensure the backups and restores are submitted on the server.
 - **Account**--Enter caroot account details.
 - **Password**--Enter the caroot password.
 - **Tape Name**--Enter the tape name that you want to use for backup. If you want to use any tape then enter *.
 - **Group Name**--Enter the group name that you want to use for backup. If you want to use any group then enter *.
4. Click OK.

You can now submit RMAN scripts from the RMAN Console to be processed by the Arcserve server.

Note: For more information about how to use the Agent for Oracle, see the *Agent for Oracle* guide.

Configure BACKINT Interface of Enterprise Option for SAP R/3

Before you can execute backup and restore operations using the option and SAPDBA, you must complete several configuration tasks. SAPDBA must be installed on the same computer as the option.

- [Configure Parameter File Settings](#) (see page 23)
- [Configure the init<SID>.sap File](#) (see page 25)
- [Create ACLs \(Access Control Lists\)](#) (see page 25)
- [Check the Arcserve Universal Agent Service Status](#) (see page 26)

Configure Parameter File Settings

The util_par_file parameter file contains parameters for controlling the backup agent configuration module (also known as BACKINT) and Arcserve Backup.

For a file sample, and definitions of file parameters, see the "Sample util_par_file and Parameter Definitions" appendix in this guide.

The parameter file name must be known to SAPDBA utilities for the proper operation of SAPDBA when it is working with Arcserve Backup; the file is located under the \$ORACLE_HOME\database directory.

To modify the settings in the parameter file

1. Start the Oracle Configuration Utility from Arcserve, Arcserve Backup Agents, SAP R/3 Oracle Option BACKINT Configuration.

The Backup Agent for R/3 Oracle Configuration window opens.

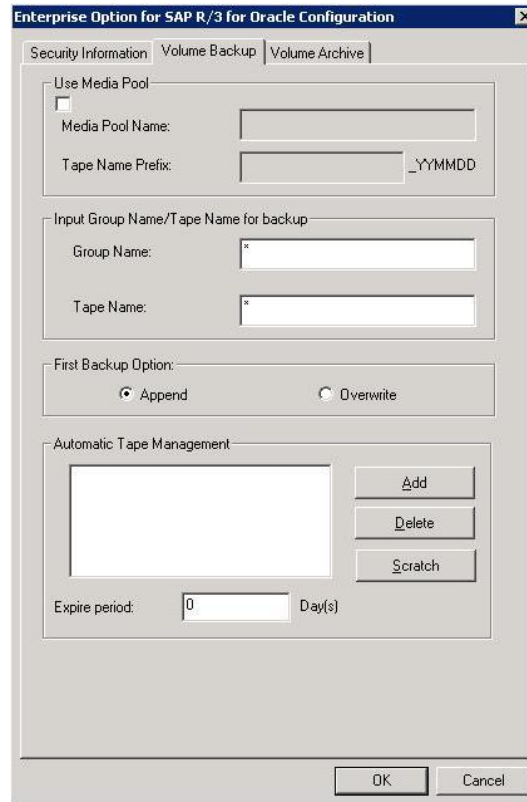
2. On the Security Information tab, select Local Server to use the local backup server.

Note: To use a remote backup server, select Remote/Cluster Server and enter Windows security information.

The screenshot shows the 'Enterprise Option for SAP R/3 for Oracle Configuration' dialog box with the 'Security Information' tab selected. The 'Backup Server Type' section has two radio buttons: 'Local Server' (unselected) and 'Remote/Cluster Server' (selected). Below this, there are two sections: 'Backup Server' and 'Local Server'. Each section has four text input fields: 'Name', 'User', 'Password', and 'Confirm Password'. In the 'Backup Server' section, the 'Name' field contains 'testwin01' and the 'User' field contains 'administrator'. The 'Password' and 'Confirm Password' fields are masked with asterisks. In the 'Local Server' section, the 'Name' field contains 'testwin02' and the 'User' field contains 'administrator'. The 'Password' and 'Confirm Password' fields are also masked. Below these sections is a 'Backup Option' section with a checkbox for 'Multi-Streaming' which is unchecked. At the bottom of the dialog is a 'Cluster Support' section with a text box containing the following instructions: 'If your SAP database is running on a Cluster server, please use virtual server name as your Local Server Name. If your Backup Server is running on a Cluster server, please use virtual server name as your Backup Server Name.' At the very bottom of the dialog are 'OK' and 'Cancel' buttons.

3. Click on the Volume Backup tab.

The Volume Backup dialog opens.



4. On the Volume Backup tab, modify media management information for BRBACKUP.

If you want to use media pool support, first create a media pool on your Arcserve Backup server, and then check the Use Media Pool check box and enter the media pool information.

5. Click on the Volume Archive tab.

The Volume Archive dialog opens.

6. On the Volume Archive tab, modify media management information for BRARCHIVE.

To use media pool support, create a media pool on Arcserve Backup server, check the Use Media Pool check box, and enter the media pool information.

Configure the init<SID>.sap File

The init<SID>.sap configuration file for SAPDBA is part of the SAP environment. It contains all backup and archive parameters. To configure this file for use with Arcserve Backup, set these parameters as follows:

To configure the init<SID>.sap file

1. Open the file with Notepad or a similar text editor.
2. Edit the file as required:
 - For an offline backup, set backup_dev_type = util_file
 - For an online backup, set backup_dev_type = util_file_online
 - Set util_par_file= *parameter_file_name*
3. Save the file.

With these changes, SAPDBA now calls the BACKINT interface instead of CPIO and assumes that BACKINT is located in the directory:

```
c:\usr\sap\SID\syslexe\run
```

You can also change the settings for the above parameters on the SAPDBA or BR* Tools Backup menu.

Create ACLs (Access Control Lists)

Access Control Lists allow you to identify the specific remote Arcserve Backup servers permitted to back up the Oracle database. If the Arcserve Backup Client Agent for Windows is installed, you can create and edit ACLs using the Backup Agent Admin.

See the Arcserve Backup Client Agent for Windows online help for more information.

If the Arcserve Backup Client Agent for Windows is not installed, ACLs can be created manually by adding new registry values.

To create ACLs

1. On the Windows Start menu, click Run.
The Run dialog opens.
2. In the Open field, enter:

```
regedit
```


The Registry Editor window opens.

3. In the tree view pane, expand the following folders to view this registry path:
Software\ComputerAssociates\CA ARCserve Backup\UniversalClientAgent\ACL
4. Double-click the appropriate registry entry and make the following entries in the Edit String dialog:
 - **ServerList** (REG_MULTI_SZ): Arcserve Backup server names. Enter one server name per line.
 - **Type** (REG_DWORD): Enter **one** of the following values:
 - 0:** (default) All Arcserve Backup servers are permitted to back up the database.
 - 1:** only Arcserve Backup servers on the list are permitted to back up the database.
 - 2:** only Arcserve Backup servers NOT on the list are permitted to back up the database.
5. Click OK on the Edit String dialog after you complete each entry.
6. Close the Registry Editor.

Check the Arcserve Universal Agent Service Status

The Arcserve Universal Agent service lets the agent support remote backups and restores of the Oracle database. It also operates as a Windows service. You can configure the server to start automatically during setup or after setup using the Control Panel Services.

To check the Arcserve Universal Agent Service Status

1. Open Control Panel and then open Services.
2. Locate the CA ARCserve Universal Agent service icon. The current mode of the service is displayed.



3. To start or stop the service, highlight the CA ARCserve Universal Agent service icon and click Start or Stop, respectively.

Backup and Restore Limitations

The following are limitations for backups and restores initiated with the option:

- The online redo logs are exclusively locked by Oracle while the Oracle database is online. Perform an offline backup if necessary.
- To restore either the system tablespace or a tablespace containing rollback segments, you must first shut down the database and perform a full database restore. For more information, see the section [Restore the System Tablespace](#) (see page 43) in this chapter.
- If you back up the Oracle database using the Arcserve Backup interface, you must restore it using the Arcserve Backup interface. Similarly, if you back up the Oracle database using RMAN, you must restore it using RMAN.
- The Agent for Oracle in File-based mode does not support backup and restore processes on raw devices and Automatic Storage Management (ASM).
- The Agent for Oracle in RMAN mode does not support backing up parameter files on raw devices.
- While performing an RMAN backup job using the Agent for Oracle, if your agent machine is unable to resolve the backup server machine name (for instance, the Backup server is in a different domain using a separate DNS server), you can manually modify your mgmtsvc.conf and clishell.cfg files on both the Arcserve server machine and Arcserve Agent machine to ensure proper hostname resolution. For more information, see the *Agent for Oracle* guide.
- Do not back up individual data files using RMAN.

Chapter 3: Using the Option with Agent for Oracle

This section contains the following topics:

[Option with Agent for Oracle](#) (see page 29)

[Online Redo Log Files](#) (see page 29)

[Multiple Databases](#) (see page 30)

[Database Backup](#) (see page 31)

[Database Restore with the Option](#) (see page 39)

[Database Recovery](#) (see page 46)

Option with Agent for Oracle

The Oracle server application is organized into databases. Each Oracle database contains the following types of objects:

- **Tablespaces**—These objects contain data and may consist of multiple data files.
- **Online redo log files**—These objects contain records of transactions applied to the tablespaces.
- **Control files**—These objects describe the structure of the database, including the tablespaces. There can be more than one control file for the database.

The Arcserve Backup Enterprise Option for SAP R/3 for Oracle lets you back up a complete database or individual objects within the database.

Online Redo Log Files

Oracle Server uses online redo log files to record all entries to the Oracle tablespaces. However, the Option for SAP R/3 for Oracle requires archived online redo log files to function properly. For Oracle to create archived redo log files, you must set Oracle to operate in ARCHIVELOG mode. Also, for the agent to back up and restore properly, you must set Oracle to automatically archive online redo log files.

Note: For information about setting Oracle so that it operates in ARCHIVELOG mode and automatically archives online redo log files, see *Enable Automatic Archiving in the Agent for Oracle guide*.

Multiple Databases

If your Oracle configuration has more than one database you can:

- View and log in to the databases
- Back up multiple databases simultaneously
- Quickly find the database objects that you want to back up

More information:

[Configure a Backup Session for Multiple Databases](#) (see page 30)

Configure a Backup Session for Multiple Databases

To configure a backup session so you can log in to and view the databases you specified during installation on an Oracle configuration containing multiple databases.

To configure a backup session for multiple databases

1. Ensure that all the Arcserve Backup and agent-related services are running.
2. Open the Backup Manager window.
3. In the Backup Manager window, expand the server on which the Oracle server is installed. All the databases you configured on the Oracle server open.
4. Right-click the database you want to log in.
A pop-up menu opens.
5. Select Security.
6. Enter the user name and password you specified during configuration. Depending on which version of Oracle you are using, this user name should be SYSTEM, or have SYSDBA equivalent privileges.
7. Click OK. Expand the selected database to view objects and to select the objects to back up.

Database Backup

Using the option you can back up complete Oracle databases and individual Oracle database objects, such as tablespaces, archived redo log files, and control files (each tablespace in a database is backed up as a separate session), parameter files and the recovery area.

You should back up all of the objects in a database immediately after you create the database and maintain a regular backup schedule to ensure smooth recovery in case of database or media failure. Arcserve Backup allows you to set and maintain a schedule of automatic backups.

For each online tablespace marked for backup, the option instructs Oracle to begin backup mode operation for the tablespace. The option retrieves the tablespace and passes it directly to Arcserve Backup, which sends it to a backup media drive. When the backup is complete, the option instructs Oracle to end the backup mode operation.

More information:

[Back Up Online Databases with Arcserve Backup](#) (see page 32)

[Back Up Offline Databases with Arcserve Backup](#) (see page 34)

[Back Up in an Oracle Fail Safe Environment](#) (see page 35)

Back Up Online Databases with Arcserve Backup

If you back up an Oracle database using the Arcserve Backup interface, you must restore it using the Arcserve Backup interface. Similarly, if you back up an Oracle database using Recovery Manager, you must restore it using Recovery Manager.

To back up an Oracle database

1. Ensure that the Oracle server application is running.
2. Start Arcserve Backup and the option.
3. In the Source tab on the Backup Manager, select the databases that you want to back up. You can select any number of databases in any combination, or all of them together.

Important! Make sure all of the tablespaces on the database are online before backing up the Oracle database.

When you back up multiple databases, you are prompted to enter the user name and password for each database. All options that apply to backing up a single online database can be applied to backing up multiple online databases.

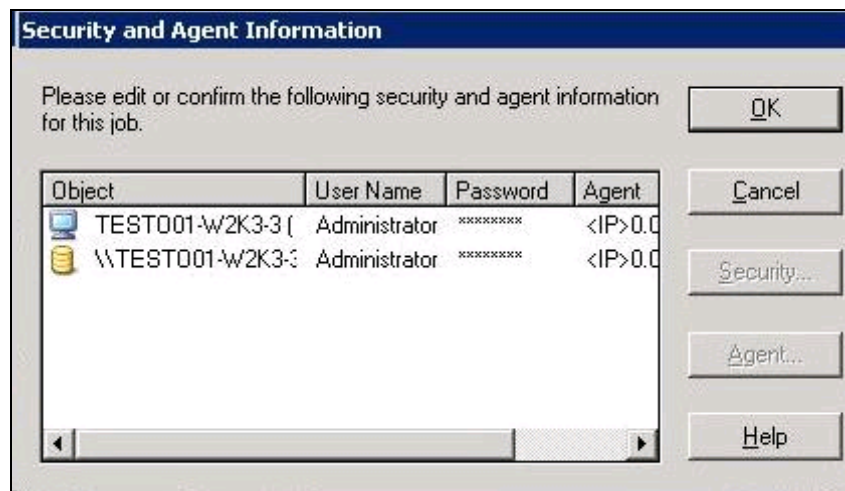
Databases are backed up sequentially on the media.

Arcserve Backup saves each tablespace (or database object) as a session. Therefore, the total number of sessions equals the total number of tablespaces, plus two additional sessions: one for archive logs for each Oracle database, and the other for the control file.

Note: If you select ~ARCHIVE LOG, the option backs up all of the archived log files under the archive log directory. If you select the control file, you must select only the control file or select the control file and **all** other tablespaces; otherwise the backup job will fail.

4. Click the Destination tab to select a backup destination.
5. Click the Schedule tab. Choose Custom Schedule or Use Rotation Scheme, and select the scheduling options you want to apply to the job.
6. Click Submit to submit the job.

The Security and Agent Information dialog opens.



7. Enter security information.

Note: In the Security and Agent Information dialog, the column and button labeled Agent refer to the Client Agent, not the Enterprise Option for SAP R/3 for Oracle. You can enter client agent information.

See the *Arcserve Backup Client Agents Guide* for more information about Client Agents.

8. Select the Oracle object and click Security.

You can enter or change the user name and password for the Oracle server application.

9. Click OK.

The Submit Job dialog opens.

10. Click OK.

The job is submitted to the queue and can be monitored from the Job Queue Manager.

Note: For more information about customizing your backup, see the *Administration Guide*.

Back Up Offline Databases with Arcserve Backup

You can back up an offline Oracle database. In this case, Arcserve Backup treats the Oracle database files the same way as it treats any other system files.

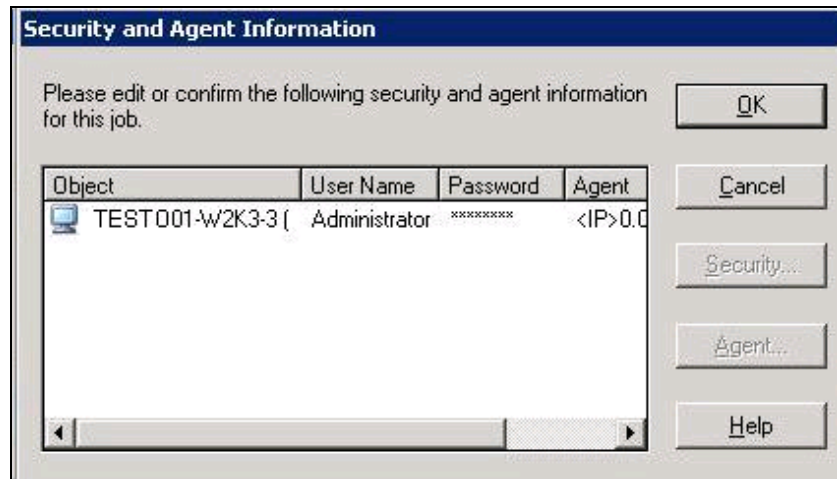
To back up an offline Oracle database

1. Start Arcserve Backup and open the Backup Manager.
2. Expand the directories.
3. Select all of the individual data files that make up the Oracle database or select the directories that contain the targeted files.

Note: Oracle database files can be located anywhere (on any hard disk or in any directory). If you are performing a full offline backup of all your Oracle databases, make sure you select all the Oracle database files located on different drives.

4. Click the Destination tab to select a backup destination.
5. Click the Schedule tab, and select the scheduling options you want to apply to the job.
6. Click Submit to submit the job.

The Security and Agent Information dialog opens.



Note: See the *Client Agents Guide* for more information about Client Agents.

7. To enter or change the user name and password for the Oracle server application, select the Oracle object and click Security.
8. Click OK.

The Submit Job dialog opens.

9. Click OK.

The job is submitted to the queue and can be monitored from the Job Queue Manager.

Back Up in an Oracle Fail Safe Environment

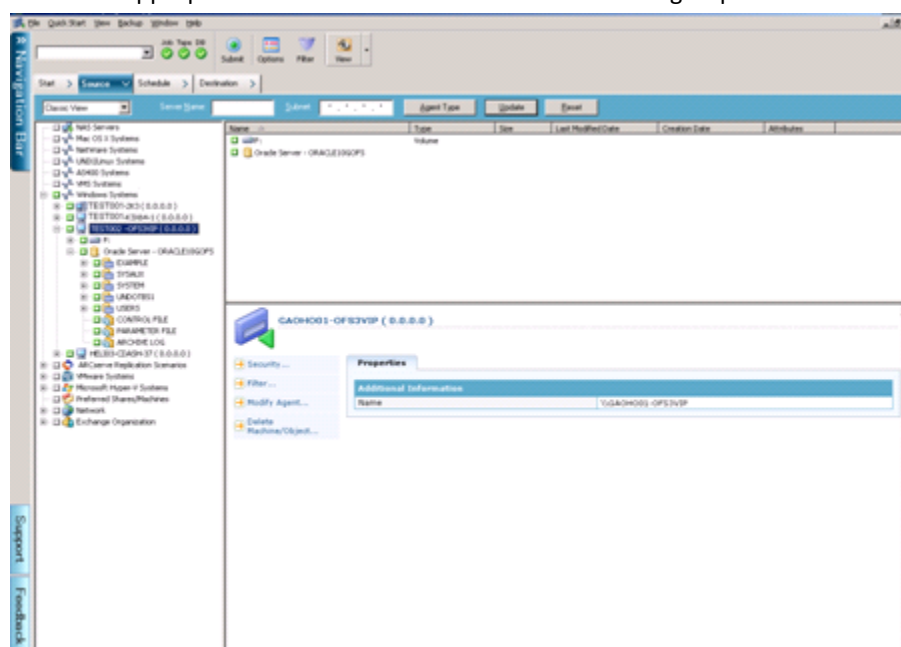
You can back up data in an Oracle Fail Safe environment.

Note: For more information about OFS, see the Oracle documentation.

To back up data in an Oracle Fail Safe environment

1. Verify that the Oracle Fail Safe group is running in your Microsoft Cluster environment.
2. Start Arcserve Backup and open the Backup Manager.
3. On the Source tab, browse the Microsoft Network or the preferred shares to locate the Oracle Fail Safe groups.

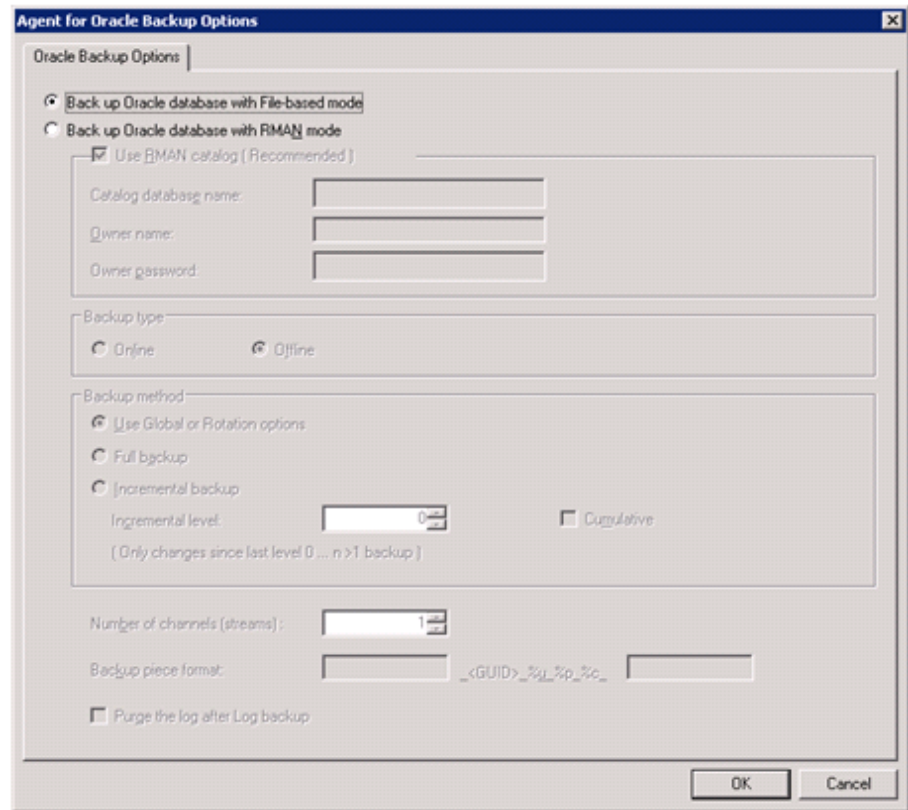
Select the appropriate Oracle server from its Oracle Fail Safe group.



4. To set backup options, select the Source tab and then right-click to select Local Options.

The Oracle Backup Options dialog opens.

5. On the Agent for Oracle Options dialog, select Back up Oracle database with File-based mode.



Click OK.

6. Double-click the Oracle server to display and select tablespaces for this instance.
7. Click the Destination tab and select a backup destination.
8. Click the Schedule tab and select the scheduling options you want to assign to this backup job.
9. Click Submit.

10. Enter the user name and password of the Oracle Fail Safe group. To enter or change security information for the Oracle Fail Safe group, select the Oracle Fail Safe group and click Security.

Click OK.

The job is submitted.

Note: Although you can browse all Oracle databases from any Oracle Fail Safe group, you can only achieve a successful backup by selecting the Oracle databases from its corresponding Oracle Fail Safe group. If the node on which the Oracle Fail Safe group is currently running enters failover mode during a backup job, the backup job is incomplete and must be resubmitted.

Oracle Recovery Manager Backup

Before performing any backup or restore operations using RMAN, enable Allow jobs to be submitted directly from the RMAN console option in the Oracle agent Configuration utility.

The media that will contain the backup file must be ready in the media drive connected to the Arcserve Backup server. If not, Arcserve Backup displays a message asking you to mount the correct media.

Note: For more information about the agent for Oracle in File-based mode and RMAN mode, see *Agent for Oracle* guide.

Connect to Recovery Manager and Back Up

You can use the following procedure to backup database objects.

To connect to Recovery Manager at the command line and back up database objects

1. Log in on the computer on which the option is running. Use a user ID with administrator privileges.
2. From the Windows Start button menu, start a command prompt session.

3. Enter the following command:

```
man nocatalog
```

The Recovery Manager starts in the command prompt window.

4. Enter the following commands to back up the database instance named test.

Note: In the following command, the `@instance_name` parameter is required only if you have multiple database instances.

```
connect target system/manager@test
RMAN> run {
```

The program provides numbered prompts for each of the following entries:

```
2> allocate channel dev1 type 'sbt_tape';
3> backup database format 'as_%s_%t';
4> release channel dev1;
5> }
```

The backup begins. The progress of the backup is displayed in the command prompt session. When the backup is complete, you can continue to work with RMAN, or you can exit the command prompt session.

Here is an example of a command prompt session that is connected to Recovery Manager:

```
Microsoft Windows [Version 5.00.2195]
(C) Copyright 1985-2000 Microsoft Corp.

C:\>rman nocatalog

Recovery Manager: Release 9.0.1.1.1 - Production
(c) Copyright 2001 Oracle Corporation. All rights reserved.

RMAN> connect target system/manager
connected to target database: TEST (DBID=1742829507)
using target database controlfile instead of recovery catalog

RMAN> run {
2> allocate channel dev1 type 'sbt_tape' ;
3> backup database format 'as_%s_%t' ;
4> release channel dev1 ;
5> }

allocated channel: dev1
channel dev1: sid=12 devtype=SBT_TAPE
channel dev1: MMS Version 0.0.0.0

Starting backup at 02-NOV-01
channel dev1: starting full datafile backupset
channel dev1: specifying datafile(s) in backupset
including current controlfile in backupset
input datafile fno=00001 name=G:\ORACLE\ORADATA\TEST\SYSTEM01.DBF
input datafile fno=00002 name=G:\ORACLE\ORADATA\TEST\UNDOTBS01.DBF
input datafile fno=00005 name=G:\ORACLE\ORADATA\TEST\EXAMPLE01.DBF
input datafile fno=00006 name=G:\ORACLE\ORADATA\TEST\INDEX01.DBF
input datafile fno=00008 name=G:\ORACLE\ORADATA\TEST\USERS01.DBF
input datafile fno=00003 name=G:\ORACLE\ORADATA\TEST\CUMPLITE01.DBF
input datafile fno=00004 name=G:\ORACLE\ORADATA\TEST\DRSYS01.DBF
input datafile fno=00007 name=G:\ORACLE\ORADATA\TEST\TOOLS01.DBF
channel dev1: starting piece 1 at 02-NOV-01
channel dev1: finished piece 1 at 02-NOV-01
piece handle=as_1.444743078 comment=API Version 1.1.MMS Version 0.0.0.0
channel dev1: backup set complete, elapsed time: 00:05:48
Finished backup at 02-NOV-01

released channel: dev1
```

After a backup job is done, you can check the job status in the Arcserve Backup activity log, or by viewing the Database Manager.

Database Restore with the Option

This section explains how to restore database objects such as tablespaces, archive log files, and control files. You can recover an individual tablespace or data file (a tablespace is composed of one or more data files).

Note: If the Oracle database is online, you can restore an individual tablespace or data file if the tablespace is offline. If the database is offline, you must recover the entire database in order to recover a tablespace or data file.

The option lets you restore the control files when you restore the database. However, Arcserve Backup backs up the control file only if you select it as a backup source on the Source tab of the Backup Manager. To back up the control file, either select all tablespaces (database objects) **and** the control file or select **only** the control file.

Note: If the current control files and the online redo log files are not damaged, it may not be necessary to overwrite the control files. Keeping the current control files makes the recovery a simpler task.

See the Oracle Server Administrator's Guide for more information about restoring a control file.

Note: The backup sessions you select to restore must have been successfully completed backup jobs. You should not attempt to restore a cancelled or failed backup job.

Best Practices for Restoring Data

The following are best practices that you can use when restoring data:

- To restore the control file, select the ~CONTROLFILE icon. The restore process saves the control file as CONTROL.SIDNAME in the option home directory. You can then use the MS-DOS copy command to copy the restored control file to the appropriate directory.

Important! You must overwrite all default database control files with the restored one. Use this format: copy CONTROL.ORCL path\ctl1ORCL.ORA

For example:

```
copy CONTROL.ORCL <path>\ctl1ORCL.ORA
```

For more information on restoring a control file, see the Oracle Server Administrator's Guide.

- To restore either the system tablespace or a tablespace containing rollback segments, you must shut down the database and perform a full database restore.
- To restore an older session of a tablespace, click Recovery Point and select the session you want to restore. After you have selected, click OK and finish the rest of the restore procedure.
- If your current control files and the archived redo log files are not damaged, you may not want to recover the backed up control files and overwrite the current control files. Keeping the current control files allows you to restore your database to the latest usable version before a crash has occurred.

Restore a Database with Arcserve Backup

You can restore a database using the following procedure.

To restore a database, tablespaces, data files, or control files

1. Shut down the Oracle server application. If you prefer not to shut down the Oracle server application, and you are restoring only a tablespace or data file, take the tablespace offline.
2. Open the Arcserve Backup Restore Manager.
3. In the Restore Manager Restore by Tree view, expand the Oracle server application and select the database or the objects you want to restore.

Note: You do not need to select a destination—the Oracle database objects are automatically restored to their original locations.

4. Click the Schedule tab and select the scheduling options you want to apply to this job.
5. Click Submit to submit the job.

Restore to an Alternate Server

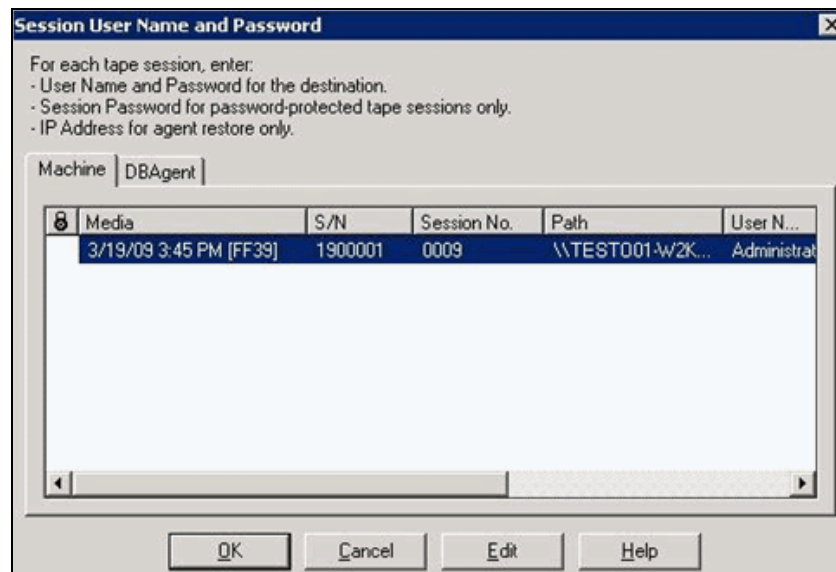
You can restore to an alternate server using the following procedure.

To restore to a server other than the server from which the backup was created

1. Select the server and the file directory you want to restore.

Note: This server must be running one of the Windows operating systems required by the option. For a list of operating systems, see the Readme.

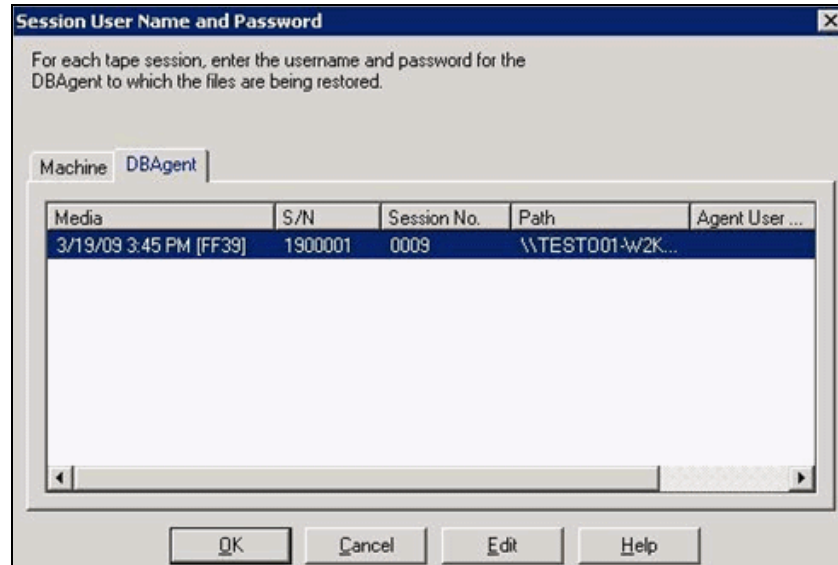
2. Click the Schedule tab and select the scheduling options you want to apply to this job.
3. Click Submit. The Session User Name and Password dialog opens.



4. To enter or change the user name and password (and the session password) for the computer on which the source Oracle application server is running, select the session and click Edit.

5. Click the DBAgent tab.

The DBAgent tab opens.



6. Enter the user name and password.

Note: For Oracle 9i and 10g, enter the user name SYSTEM.

7. For any version, the user name can also be any account with SYSDBA equivalent privileges.
8. Click OK.

The job is submitted to the queue and can be monitored from the Job Queue Manager.

When the job is completed, the database objects are restored to the selected server. It may be necessary to manually move the Oracle files into the proper locations after the restore is complete.

If the Oracle database has multiple archived log directories and archived log files that have been restored, to synchronize them, you must copy the restored files to the archived log directories.

See the following sections for information about recovering the Oracle database. For more information about submitting a restore job, see the *Administration Guide*.

Restore the System Tablespace

You can use the following procedure to restore the system tablespace.

To restore the system tablespace

1. Shut down the database.
2. Open the Restore Manager.
3. On the Source tab, select the Restore by Tree view and select the tablespace you want to restore.

Note: The Oracle database objects are automatically restored to their original locations. You do not need to select a destination.

4. Click the Schedule tab and select the scheduling options you want to apply to this job.
5. Click Submit.

The Session User Name and Password dialog opens.

6. To enter or change the user name and password (and the session password) for the machine on which the Oracle server is running, select the session and click Edit.
7. Enter the user name and password:
 - For Oracle 9i and 10g, enter the user name SYSTEM.
 - For any version, the user name can also be any account with SYSDBA equivalent privileges.
8. Click OK.

The job is submitted to the queue and can be monitored from the Job Queue Manager.

Restore Databases Backed Up Offline

To restore an offline backup, shut down the Oracle server application, and restore the Oracle files using Arcserve Backup. You must select all of the files that make up the database; these files may be located on different physical drives or volumes.

Note: The backup you want to restore from must be a backup that was created with the Arcserve Backup Manager. You cannot use the Arcserve Backup interface to restore from a backup that was created with Recovery Manager.

Restore in an Oracle Fail Safe Environment

You can use the following procedure to restore in an Oracle fail safe environment.

To restore in an Oracle Fail Safe environment with Arcserve Backup

1. Open the Arcserve Backup Restore Manager.
2. On the Source tab, select the Restore by Tree or Restore by Session option. Select the source you want to restore and a backup version or sessions for the tablespace.
3. Click the Destination tab and select a destination. You can restore to either the original location or server or an alternate location or server.
 - If you are restoring to the original location, verify that Restore files to their original location(s) is selected.
 - If you are restoring to a specific node in the Oracle Fail Safe group, clear the checkmark next to Restore files to their original location(s) and select the Oracle database from the node to which you want to restore.

4. Click Submit.

The Session User Name and Password dialog opens.

5. Verify or change the user name and password for the Oracle Fail Safe group tablespace and the Microsoft Cluster Server. To change the user name and password for the Microsoft Cluster Server, select the session and click Edit. If a session password was assigned to this session, enter the session password. Click OK.

The Job Scheduler dialog opens.

6. Schedule the job to run now or at a later time, and then click OK.

The job is submitted to the queue and can be monitored from the Job Queue Manager.

Oracle Recovery Manager Restore

Before performing any backup or restore operations with Oracle Recovery Manager (RMAN), enable Allow jobs to be submitted directly from the RMAN console option in the Oracle agent Configuration utility. For more information, see [Oracle Recovery Manager Backup](#) (see page 37).

The media containing the backup file that you are restoring from must be ready in the media drive connected to the Arcserve Backup server. If not, Arcserve Backup displays a message asking you to mount the correct media.

Note: The backup you want to restore from must be a backup that was created with Recovery Manager. You cannot use Recovery Manager to restore from a backup that was created with the Arcserve Backup interface.

Connect to Recovery Manager and Restore

You can use the following procedure to connect to recovery manager.

To connect to Recovery Manager at the command line and restore database objects

1. Log in on the computer on which the option is running. Use a user ID with administrator privileges.
2. From the Windows Start button menu, start a command prompt session.
3. Enter the following command:

```
rman nocatalog
```

The Recovery Manager starts in the command prompt window, and the command line prompt becomes RMAN>.

4. Enter the following commands to back up the database instance named test.

Note: In the following command, the `@instance_name` parameter is required only if you have multiple database instances.

```
connect target system/manager@test  
RMAN> run {
```

The program provides numbered prompts for each of the following entries:

```
2> allocate channel dev1 type 'sbt_tape';  
3> restore database;  
4> release channel dev1;  
5> }
```

The restore begins and the progress of the restore is displayed in the command prompt session. When the restore is complete, you can continue to work with RMAN, or you can exit the command prompt session.

Restore to a Particular Point in Time

To restore a database or tablespace to a particular point in time, follow the procedures to restore a database or a tablespace and the associated archive log files. For more information, see [Restore a Database with Arcserve Backup](#) (see page 40).

See your *System Administrator Guide* for more information about restoring or recovering the database or tablespace to a particular point in time.

Archive Logs Restore

If both the control files and archive log files have been lost or corrupted, you must select both `~CONTROLFILE` and `~ARCHIVE LOG` icons as source sessions to be restored.

Database Recovery

After you restore the database objects to the server, you must recover the database. You can recover the database or database objects using one of the following methods:

- Recover a complete database
- Recover a complete database with a backed up control file
- Recover a tablespace or data file
- Recover from an offline full backup

These methods are described in the following sections.

Recover Old Databases

After you have completed a successful restore of a database, you must use the Oracle Server Manager Console to recover the database of the earlier versions.

To recover a database with current control files

1. Start the database instance, and mount the database without opening it.

Now at the SQL*Plus prompt enter

```
CONNECT SYS/SYS_PASSWORD AS SYSDBA;  
STARTUP MOUNT
```

Note: You may use a different Oracle SYSDBA instead of SYSTEM if the SYSDBA has the proper backup and restore privileges.

2. Begin the database recovery process by entering the following command at the SQL*Plus prompt:

```
RECOVER DATABASE
```

3. Oracle checks for the archive redo log files it needs to apply and prompts for the names of these archive redo log files in chronological order.

For example, if Oracle needs the name of the archive redo log file with a sequence number of 49, the following message displays:

```
ORA-00279: Change 10727 generated at 09/15/95 16:33:17 needed for thread 1  
ORA-00289: Suggestion : D:\ORANT\japarch\ARC00049.001  
ORA-00200: Change 10727 for thread 1 is in sequence #49  
Specify log<<RET>>suggested : filename : AUTO : FROM logsource : CANCEL
```

4. If you have all of the necessary archived log files, enter AUTO to apply the files. Oracle applies the log data to restore the datafiles. After Oracle finishes applying the redo log file, the following message is displayed:

```
Applying suggested logfile...  
Log applied.
```

After each log is applied, Oracle continues to apply the next redo log file until the recovery is complete.

Note: If Oracle returns an error indicating that the log file cannot be opened, the log file may not be available. At the prompt, enter CANCEL. This command stops the complete media recovery.

For more information about recovery and archive redo log files, see the Oracle documentation.

5. Open the database by entering the following command:

```
ALTER DATABASE OPEN;
```

The database is now recovered to the last log file available.

Note: For the most reliable database objects recovery, you should back up archived log files using the `~ARCHIVELOG` object. For more information on database recovery, see Oracle documentation.

Recover Complete Databases with Backed Up Control Files

You must also use the Oracle Server Manager or Oracle SQL*Plus to perform the recovery procedure.

To recover the complete database

1. Start and mount the database and recover the database. At the SQL*Plus prompt, enter the following commands:

```
CONNECT SYS/SYS_PASSWORD AS SYSDBA;
```

```
STARTUP MOUNT;
```

```
RECOVER DATABASE USING BACKUP CONTROLFILE UNTIL CANCEL;
```

2. You are prompted to enter the log file names.

Oracle first looks for the archive log files, and automatically supplies the correct names for the files that exist. If it cannot find the necessary archive log files, you must manually apply the online redo logs.

3. Enter the complete path and file name for the online redo logs. If you enter an incorrect log, re-enter the command:

```
RECOVER DATABASE USING BACKUP CONTROLFILE UNTIL CANCEL;
```

Now enter the correct online redo log file name at the prompt. Continue this procedure until all logs have been successfully applied.

4. To bring the database back online and reset the logs, enter the following command at the SQL*Plus prompt:

```
ALTER DATABASE OPEN RESETLOGS;
```

5. In the directories where the archived redo logs are stored, delete all of the log files.

6. To bring any tablespaces that are still offline back online, enter the following command at the SQL*Plus prompt:

```
ALTER TABLESPACE TABLESPACE_NAME ONLINE;
```


Recover Old Tablespaces or Data Files

If the Oracle database is open, you can restore and recover a tablespace by first placing the tablespace offline.

To recover a tablespace or data file

1. Take the tablespace offline by entering the following command at the SQL*Plus prompt:

```
ALTER TABLESPACE "tablespace_name" OFFLINE;
```

Note: The Oracle server may take the damaged tablespace offline automatically. If that is the case, go to Step 2.

2. Restore the tablespace or data file using Arcserve Backup and the Arcserve Backup Agent for Oracle if you have not done so.
3. Begin the database recovery process:

- If you are recovering a **tablespace**, enter the following command at the SQL*Plus prompt:

```
RECOVER TABLESPACE "tablespace_name";
```

- If you are recovering a **data file**, enter the following command at the SQL*Plus prompt:

```
RECOVER DATAFILE 'path';
```

For example,

```
RECOVER DATAFILE 'T:\Oracle\Oradata\Orcl\Backup.Ora';
```

4. Oracle checks for the archive redo log files it needs to apply and prompts for the names of these archive redo log files in chronological order.

For example, when Oracle needs the name of the archive redo log file with a sequence number of 49, it displays the following message:

```
ORA-00279: Change 10727 generated at 09/15/95 16:33:17 needed for thread 1
ORA-00289: Suggestion : D:\ORANT\saparch\ARC00049.001
ORA-00200: Change 10727 for thread 1 is in sequence #49
Specify log<<RET>>suggested : filename : AUTO : FROM logsource : CANCEL
```

5. If you have all the necessary archived log files, enter AUTO to apply the files. Oracle applies the log data to restore the datafiles. After Oracle finishes applying the redo log file, it displays the following message:

```
Applying suggested logfile...
Log applied.
```

After each log is applied, Oracle continues to apply the next redo log file until the recovery is complete.

Note: If Oracle returns an error indicating that the log file cannot be opened, the log file may not be available. At the prompt, enter CANCEL. This command stops the complete media recovery. In this case, perform the incomplete media recovery to restore the tablespace again. After all the log files are applied, database recovery is complete. For more information about incomplete media recovery, see the Oracle documentation.

6. Open the database by entering the following command:

```
ALTER TABLESPACE "tablespace_name" ONLINE;
```

The tablespace is now recovered to the last available log file.

Note: For the most reliable database objects recovery, you should back up archived log files using the ~ARCHIVELOG object. For more information on database recovery, see the Oracle documentation.

Recover From Offline Full Backups

You can recover an Oracle database from an offline full backup. To recover from an offline backup, shut down the Oracle server application and restore the Oracle files using the Arcserve Backup Restore Manager. You must select all of the files that make up the database.

Note: The backup you want to restore from must be a backup that was created with Backup Manager. You cannot use Restore Manager to restore from a backup that was created with the Recovery Manager interface.

Chapter 4: Using the Option with SAPDBA for Oracle

This section contains the following topics:

[SAPDBA](#) (see page 51)

[Restore and Recover Using SAPDBA](#) (see page 57)

[The BACKINT Job Status](#) (see page 57)

SAPDBA

By using the SAPDBA menu, you can perform various database administration functions, including the following:

- Backing up, restoring, and recovering data
- Starting up and shutting down databases
- Extending tablespaces
- Monitoring and analyzing space on the database
- Reorganizing databases
- Recovering databases

SAPDBA uses BRBACKUP, BRARCHIVE, and BRRESTORE modules (which are embedded in the menu structure of SAPDBA) to integrate with the database backup, restore, and inquiry functions.

SAPDBA evaluates logs to decide if data can be recovered using the selected backups. SAPDBA evaluates the selected backup method and determines if it will prevent recovery between the time of the backup and the selected recovery end time (point in time). If SAPDBA cannot perform a recovery, it rejects the selected backup or recovery procedure.

Note: Although SAPDBA 6.20 is no longer developed by SAP, it is still available for Oracle 9i. For more information, see the SAP documentation.

Since SAPDBA is not supported by BR*Tools 6.4 or higher versions, you can use BR*Tools to perform backup and restore jobs. For more information about BR*Tools, see [Using the Option with BR*Tools for Oracle](#) (see page 59).

More information:

[How SAPDBA Works](#) (see page 52)

How SAPDBA Works

Integrating SAPDBA with the option lets you back up and restore entire databases and reset database to a previous state. When you start a job, SAPDBA is automatically started. SAPDBA functions are determined by the properties that are set in util_par_file.

For more information on setting util_par_file properties, see [Configure Parameter File Settings](#) (see page 23).

The following modules are available for Oracle database administration:

BRBACKUP

Brings database servers online or offline, checks the file status, and places database tablespaces into backup mode to maintain consistency.

BRARCHIVE

Provides online and offline backup of control files, data files, and online redo log files as well as profiles and logs for backups.

BRRESTORE

Recovers database data files, control files, and online redo log files. Checks for available space prior to a restore while removing files that may be overwritten during the recovery.

When these modules are used, events are logged in the file system and corresponding database tables. When BRBACKUP or BRARCHIVE runs, backup logs and profiles are saved, enabling sophisticated volume management.

Database Backup Using SAPDBA and BR* Tools

SAPDBA and BR* Tools let you back up complete databases or individual database objects such as tablespaces, control files, or archive logs. It works with Arcserve Backup to back up data while the database is online or offline. When performing an online backup, the database is running and still accessible to users; when performing an offline backup, the database shuts down and is inaccessible to users.

More information:

[Back Up Online Databases with SAPDBA](#) (see page 53)

[Back Up Offline Databases with SAPDBA](#) (see page 55)

[Back Up Offline Redo Logs](#) (see page 56)

Back Up Online Databases with SAPDBA

You can backup online databases using this procedure.

To back up online databases with SAPDBA

1. Log onto SAPDBA.

The SAPDBA main screen opens.

```

SAPDBA U6.20 - SAP Database Administration - on WIN NT 5.2

ORACLE version: 9.2.0.1.0
ORACLE_SID      : CER
ORACLE_HOME     : d:\oracle9i
DATABASE        : db status unknown

a - Startup/shutdown instance      h - Backup database
b - Instance information            i - Backup offline redo logs
c - Tablespace administration      j - Restore/recovery
d - Reorganization                 k - DB check/verification
e - Export/import                   l - Show/cleanup
f - Archive mode                    m - User and security
g - Additional functions

q - Quit

Please select ==> _

```

2. Enter **h**—Backup database.

The Backup Database screen opens.

```

Backup Database <DB status is db status unknown>

a - Backup function                  Current value
b - Parameter file                  Normal backup
c - Backup device type              initCER.sap
d - Objects for backup              external backup tool (backint)
e - Backup type                     all
g - Query only                      offline
h - Special options ...             no
i - Standard backup                 yes
j - Backup from disk backup
l - Restart backup
n - Make part. backups compl.

s - Start BRBACKUP <U6.20 >
q - Return

Please select ==> _

```

3. Enter **c**—Backup device type.
The Select backup device type screen opens.
4. Enter **g**—external backup tool (BACKINT). This is the only device type you can select when using SAPDBA for online database backup.
5. Enter **q** to return to the previous screen.
6. At the Backup Database screen, select **e** - Backup type.
7. At the Backup type screen, select **a** - online.
8. Enter **q** to return to the previous screen.
9. Enter **d**—Objects for back up.
The text opens.
10. Enter **q** to return to the Backup database screen.
11. Enter **s**—Start BRBACKUP to begin the back up.

Back Up Offline Databases with SAPDBA

You can back up offline databases using this procedure.

To back up offline databases with SAPDBA

1. Log onto SAPDBA.
The SAPDBA main screen opens.
2. Enter **h**—Backup database.
The Backup database screen opens.
3. Enter **c**—Backup device type.
The Backup device type screen opens.
4. Enter **f**—util_file. This is the only device type you can select when using SAPDBA for offline database backup.
5. Enter **q** to return to the previous screen.
6. Enter **e**—backup type at the Backup Database screen.
7. Ensure that **b**—offline is selected at the Backup type screen.
8. Enter **q**—to return to the previous screen.
9. Enter **d**—Objects for backup.
The Backup Mode/Backup Objects screen opens.

```

Backup Mode/Backup Objects

Current selection: "all"
a - "all" - whole database backup
b - "all_data" - whole database without index tablespaces
c - "full" - full backup (level 0)
d - "incr" - incremental backup (level 1)
e - "sap_dir" - SAP directories backup
f - "ora_dir" - ORACLE directories backup
g - - a tablespace name
h - - an ORACLE file id <number>
  or a range of file ids <number>-<number>
i - - an absolute file or directory name
j - - a combination: <item> or <item>,<item>,...

q - Return

Please select ==>

```

10. After you select an object for backup, enter **q** to return to the Back up database screen.
11. Enter **s**—Start BRBACKUP to begin the backup.

Back Up Offline Redo Logs

You can use the following procedures to back up offline redo files.

To back up offline redo logs

1. Log onto SAPDBA.

The SAPDBA main screen opens.

2. Ensure that SAPDBA is in archive log mode and that automatic archive is enabled.
3. Enter **i**—Backup offline redo logs.

The Backup Offline Redo logs screen opens.

```

Backup Offline Redo Logs
-----
a - Archive function           Current value
b - Parameter file             Save offline redo logs
c - Archive device type        initCER.sap
d - Number of redo logs        external backup tool (backint)
f - Query only                 10000
g - Fill tape(s) permanently   no
h - Special options ...
i - Standard backup of offline redo logs  yes
j - Backup from disk backup      no
q - Return
S - Start BRARCHIVE <U6.20 >
Please select ==> _

```

4. Enter **e**—Archive device type, at the Backup archive logs screen.

The Select archive device type screen opens.

5. Enter **g**—util_file_online, at the Archive device type screen. This is the only archive device type you can select when using SAPDBA for archive redo log backup.
6. Enter **q**—to return to the previous menu.
7. Enter **g**—Number of redo logs. When prompted, enter the number of redo logs.
8. Enter **q**— to return to the previous menu.
9. Enter **s**—Start BRARCHIVE.

Restore and Recover Using SAPDBA

You can use the following procedure to restore and recover using SAPDBA.

To restore or recover databases with SAPDBA

1. Log onto SAPDBA.

The SAPDBA main screen opens.

2. Ensure that Expert mode is ON.

Note: Before restoring data through SAPDBA, you must be in Expert mode. See your SAP manual for instructions.

3. From the main screen, enter k—Restore/recovery.

The Restore / Recovery screen opens.

```

Restore / Recovery (2008-02-14)

a - Partial restore and complete recovery (Check and repair,
redo logs and control files are prerequisites)
b - Full restore and recovery
(excl. redo logs, control files incl. if required)
c - Reset database
(incl. redo logs and control files)

d - Restore one tablespace
e - Restore individual file(s)

h - Help
q - Return

Please select ==> _

```

Full Restore lets you restore the database and startup open (no recovery possible), or restore the database and startup mount (for manual recovery using the backup control file).

Full Restore and Recovery allows you to select a full online or offline backup, restore and recover database objects, recover until (allows you to choose among proper timestamps), or show the status of the job.

4. Choose the type of restore from the Restore/Recovery menu options.

See your SAP manual for more information about completing the remaining restore or recovery steps.

The BACKINT Job Status

When you use BACKINT to back up or restore a database, you can view the status of the job using Arcserve Backup or SAPDBA.

More information:

[Job Status Information](#) (see page 73)

Chapter 5: Using the Option with BR*Tools for Oracle

This section contains the following topics:

[BR*Tools](#) (see page 59)

[Configure BR*Tools](#) (see page 59)

[Profile File](#) (see page 60)

[Environment Variables](#) (see page 60)

[Database Backup Using the BR*Tools Command](#) (see page 60)

[Database Restore Using BR*Tool Commands](#) (see page 63)

[Using BACKINT Command Line for Querying Backup Information](#) (see page 66)

BR*Tools

BR*Tools is the program package containing BRBACKUP, BRARCHIVE, and BRRESTORE and other options. BR*Tools 6.40, can be used for all SAP releases based on Oracle 9i. You can use the BR*Tools with the Arcserve Enterprise Option for SAP R/3 for Oracle and perform the backup and restore jobs.

Note: For more information about BR*Tools, see the SAP documentation.

Configure BR*Tools

You must configure the BR*Tools by using the following procedure.

To configure BACKINT interface

1. Configure the BACKINT interface using SAP R3 Oracle Option BACKINT Configuration.
2. Set environment variables. For example:

```
set ORACLE_SID=CER
set ORACLE_HOME=e:\oracle\ora92
set SAPDATA_HOME=e:\oracle\cer
set Path=%PATH%;e:\usr\sap\CER\sys\exe\run
```

Note: For more information about environment variables, see [Environment Variables](#) (see page 60).

3. Run the necessary BR*Tools command to perform backup and restore jobs.

Profile File

The initialization profile `init <ORACLE_SID>.sap` contains parameters that decide how the SAP tools perform various functions. You can specify the required settings in the initialization profile. The default initialization profile `init<ORACLE_SID>.sap` is as follows:

```
%<ORACLE_HOME>%\database\init< ORACLE_SID >.sap
```

Environment Variables

Environment variables define parameter values used by the Oracle database and BR*Tools. This section describes the variables used in the Windows operating system.

ORACLE_SID

This variable is the System ID of the database instance.

ORACLE_HOME

This variable is the home directory of the Oracle software. This variable no longer needs to be set. If not set, the SAP tools determine its value from the registry.

SAPDATA_HOME

This variable is the directory of the database files.

Database Backup Using the BR*Tools Command

You can perform the backup and archive jobs using the BR*Tools commands. Some of the command options include the BRBACKUP, BRRESTORE and BRARCHIVE.

- [Online Backup of a Complete Database](#) (see page 61)
- [Online Backup of Control File](#) (see page 61)
- [Offline Backup of Tablespace](#) (see page 62)
- [Save Offline Redo Log Files](#) (see page 62)
- [Copy and Delete Saved Offline Redo Log Files and Save New Redo Log Files](#) (see page 62)

Online Backup of a Complete Database

Arcserve Backup lets you back up a complete database.

To back up complete database

1. Configure the backint interface using SAP R3 Oracle Option BACKINT Configuration.
2. Set the environment variable.
3. Execute the following command:

```
brbackup -d util_file -t online -m all [-u <username>/<password>]
```

```
C:\Documents and Settings\Administrator>BRBackup -d util_file -t online -n PSAPBTABI -u system/manager
BR0051I BRBACKUP 6.40 (26)
BR0169W Value 'ibs=' of parameter/option 'dd_in_flags' ignored for 'Windows' - 'bs=' assumed
BR0055I Start of database backup: bdyhdruv.pnf 2008-07-04 17.32.26
BR0280I BRBACKUP time stamp: 2008-07-04 17.32.43
BR0319I Control file copy created: e:\oracle\cer\sapbackup\cntrlCER.dbf 3629056
BR0280I BRBACKUP time stamp: 2008-07-04 17.32.45
BR0057I Backup of database: CER
BR0058I BRBACKUP action ID: bdyhdruv
BR0059I BRBACKUP function ID: pnf
BR0110I Backup mode: PARTIAL
BR0060I Tablespace for backup: PSAPBTABI
BR0077I Database file for backup: e:\oracle\cer\sapbackup\cntrlCER.dbf
BR0061I 2 files found for backup, total size 8.469 MB
BR0143I Backup type: online
BR0130I Backup device type: util_file
BR0109I Files will be saved by backup utility
BR0280I BRBACKUP time stamp: 2008-07-04 17.32.45
BR0256I Enter 'c[ont]' to continue, 's[top]' to cancel BRBACKUP:
```

Online Backup of Control File

You can use the following procedure to back up control file.

To backup online control file

1. Configure the backint interface using SAP R3 Oracle Option BACKINT Configuration.
2. Set environment variable.
3. Run the command

```
brbackup -d util_file -t online -m 0 [-u <username>/<password>]
```

Offline Backup of Tablespace

You can perform offline back up of a tablespace using the following procedure.

To perform an offline backup of a tablespace

1. Configure the backint interface using SAP R3 Oracle Option BACKINT Configuration.
2. Set the environment variable.
3. Execute the following command:

```
brbackup -d util_file -t offline -m <TABLESPACE> [-u <username>/<password>]
```

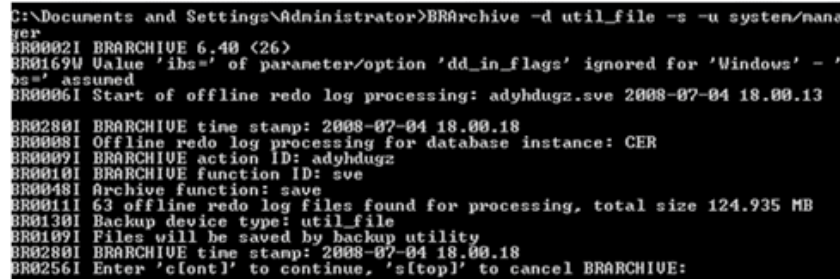
Save Offline Redo Log Files

You can save and archive the redo log files using the following procedure.

To save offline redo log files

1. Configure the backint interface using SAP R3 Oracle Option BACKINT Configuration.
2. Set the environment variable.
3. Execute the following command to save the log files:

```
brarchive -d util_file -s [-u <username>/<password>]
```



```
C:\Documents and Settings\Administrator>BRArchive -d util_file -s -u system/nana
ger
BR00021 BRARCHIVE 6.40 <26>
BR01690 Value 'ibs=' of parameter/option 'dd_in_flags' ignored for 'Windows' -
bs=' assumed
BR00061 Start of offline redo log processing: adyhdugz.sve 2008-07-04 18.00.13
BR02801 BRARCHIVE time stamp: 2008-07-04 18.00.18
BR00081 Offline redo log processing for database instance: CER
BR00091 BRARCHIVE action ID: adyhdugz
BR00101 BRARCHIVE function ID: sve
BR00481 Archive function: save
BR00111 63 offline redo log files found for processing, total size 124.935 MB
BR01301 Backup device type: util_file
BR01091 Files will be saved by backup utility
BR02801 BRARCHIVE time stamp: 2008-07-04 18.00.18
BR02561 Enter 'c[ont]' to continue, 's[top]' to cancel BRARCHIVE:
```

Copy and Delete Saved Offline Redo Log Files and Save New Redo Log Files

You can copy and delete saved offline redo log files and save new redo log files using the following procedure.

To copy and delete saved offline redo log files and save new redo log files

1. Configure the backint interface using SAP R3 Oracle Option BACKINT Configuration.
2. Set the environment variable.
3. Copy and delete saved offline redo log files and save new redo logs files using the following command.

```
brarchive -d util_file -c[ont] [-u <username>/<password>]
```

Database Restore Using BR*Tool Commands

You can perform restore jobs using the BR*Tools commands and the option.

Note: Ensure you have a copy of the original files as the BRRestore command can delete original files when database is shutdown or when the tablespaces are offline.

- [Restore Complete Database](#) (see page 63)
- [Restore Control Files](#) (see page 64)
- [Restore Offline Redo Log Files](#) (see page 64)
- [Partial Restore to a Different Directory](#) (see page 65)

Restore Complete Database

You can restore all tablespaces without the control file and online redo log files, starting from the last successful backup.

Note: Ensure you have a copy of the original files as the BRRestore command can delete original files when database is shutdown or when the tablespaces are offline.

To restore complete database

1. Configure the backint interface using SAP R3 Oracle Option BACKINT Configuration.
2. Set environment variable.
3. Run the command.

```
brrestore -d util_file -b last -m all [-u <username>/<password>]
```

```
C:\Documents and Settings\Administrator>BRRestore -d util_file -b last -m PSAPBT
ABI -u system/manager
BR0401 BRRESTORE 6.40 <26>
BR0169U Value 'ibs=' of parameter/option 'dd_in_flags' ignored for 'Windows' - '
bs=' assumed
BR0405I Start of file restore: rdyhdsgv.rsb 2008-07-04 17.37.37
BR0428U File E:\ORACLE\CEP\SAPDATA2\BTABI_1\BTABI.DAT01 will be overwritten
BR0280I BRRESTORE time stamp: 2008-07-04 17.37.37
BR0256I Enter 'c[font]' to continue, 's[top]' to cancel BRRESTORE:
c
BR0280I BRRESTORE time stamp: 2008-07-04 17.37.44
BR0257I Your reply: 'c'
BR0259I Program execution will be continued...
BR0457I Probably the database must be recovered due to partial restore
BR0280I BRRESTORE time stamp: 2008-07-04 17.37.44
BR0407I Restore of database: CEP
BR0408I BRRESTORE action ID: rdyhdsgv
BR0409I BRRESTORE function ID: rsb
BR0449I Restore mode: partial
BR0410I Tablespace for restore: PSAPBTABI
```

Restore Control Files

Arcserve Backup lets you restore a control file using the following procedure.

Note: Ensure you have a copy of the original files as the BRRestore command can delete original files when database is shutdown or when the tablespaces are offline.

To restore control files

1. Configure the backint interface using SAP R3 Oracle Option BACKINT Configuration.
2. Set the environment variable.
3. Execute the following command.

```
brrestore -d util_file -m 0 [-u <username>/<password>]
```

Restore Offline Redo Log Files

You can restore offline redo log files for the log sequence numbers from <log_nr1> to <log_nr2>.

Note: Ensure you have a copy of the original files as the BRRestore command can delete original files when database is shutdown or when the tablespaces are offline.

To restore offline redo log files

1. Configure the backint interface using SAP R3 Oracle Option BACKINT Configuration.
2. Set the environment variable.
3. Execute the following command:

```
brrestore -d util_file -a <log_nr1>-<log_nr2> [-u <username>/<password>]
```

For example, the following syntax restores offline redo log files contained within log sequence numbers 200 to 220:

```
brrestore -d util_file -a 200-220 [-u <username>/<password>]
```


Partial Restore to a Different Directory

You can perform a partial restore to a different directory from the last backup.

To perform a partial restore to different directory

1. Configure the backint interface using SAP R3 Oracle Option BACKINT Configuration.
2. Set the environment variable.
3. Run the command.

```
brrestore -d util_file -b last -m <TABLESPACE>=<The whole path of directory> [-u  
<username>/<password>]
```

For example:

To restore tablespace PSAPDDICD from the last backup to the directory "E:\temp":

```
brrestore -d util_file -b last -m PSAPDDICD=E:\temp [-u <username>/<password>]
```

Using BACKINT Command Line for Querying Backup Information

You can use the BACKINT command line to query backup information.

To query backup information using BACKINT command line

1. Query all backed up information using a BACKINT call. The call requires no further specifications. The input file must contain the entry '#NULL' and optionally the '-o' switch.

```
backint -u <SID> -f inquire -t file -p <util_profile> -i <input_file> [-o <output_file>]
```

SID: Oracle SID

util_profile: util file init<SID>.utl path

input file: the input file which context must contain an entry '#NULL'

For example:

```
backint -u CER -f inquire -t file -p "F:\oracle\product\10.2.0\db_1\database\initcer.utl" -i "c:\input.txt" [-o "c:\output.txt"]
```

2. Query all backed up information using a BACKINT call. You must specify the backup_id. The input file must contain the entry '<backup_id>' and optionally the '-o' switch.

```
backint -u <SID> -f inquire -t file -p <util_profile> -i <input_file> [-o <output_file>]
```

3. Query all backed up information using a BACKINT call. You must specify a value for file_name. The input file must contain the entry '#NULL <backup_id>' and optionally the '-o' switch.

```
backint -u <SID> -f inquire -t file -p <util_profile> -i <input_file> [-o <output_file>]
```

4. Query all backed up information using a BACKINT call. You must specify a value for backup_id and file_name. The input file must contain values that are similar to '<backup_id_1><file_name_1>', '<backup_id_2><file_name_2>', or both, and optionally the '-o' switch.

```
backint -u <SID> -f inquire -t file -p <util_profile> -i <input_file> [-o <output_file>]
```

Appendix A: Best Practices

This chapter presents best practices for using the Enterprise Option for SAP R/3 for Oracle to backup and restore Oracle databases managed by SAP R/3 for Oracle.

This section contains the following topics:

[Recommended Backup Procedures](#) (see page 67)

[Backup and Recovery Strategies](#) (see page 68)

[Test Environment](#) (see page 68)

[Log File Protection](#) (see page 68)

[Backups After Organizational Changes](#) (see page 69)

Recommended Backup Procedures

We recommend following these backup procedures:

- When a database is initially created, perform a full offline backup of the entire database using Arcserve Backup without the option. This provides copies of all data files, redo log files, and control files of your database.
- Perform an online backup of your Oracle databases.
- Extensively used tablespaces should be backed up frequently to reduce database recovery time.

For more information about Oracle backup and recovery procedures, see the Oracle Server Administrator's Guide.

Backup and Recovery Strategies

Plan your backup and recovery strategies for a database before you create the database, and maintain a regular backup schedule to ensure smooth recovery in case of database or media failure. If such planning is not considered before database creation, database recovery may not be possible in certain cases.

Note: For more information about disaster recovery planning, see [Disaster Recovery Scenarios](#) (see page 79).

When you develop your backup and recovery strategy, consider the following:

- **Full backups**—Full database backups should be performed regularly; it is easier to recover a database from a full backup.
- **Tablespace-level backups**—Recoverable databases allow tablespace-level backups, which can be done online or offline. For an isolated application error, it is easier to restore from a tablespace-level backup image.
- **Online or offline backups**—Offline backups are usually faster, but require exclusive access to the database. Online backups reduce the database downtime; however, they allow other connections to the database while the backup is taking place.

Test Environment

Test your backup and recovery strategy in a test environment before you move to a production system. By thoroughly testing your proposed backup and recovery strategy, you can identify and correct unexpected problems before they occur in a production situation.

Log File Protection

Do not overwrite log files if you archive and retrieve files on the same directory. To protect your archived log files, restore them to a separate retrieval directory.

Backups After Organizational Changes

Initiate a backup each time you take the following actions:

- Rename a tablespace.
- Restore a tablespace that has been renamed, using the new tablespace name.
- Reorganize a table.
- Back up a corresponding tablespace after you reorganize a table.
- Change the tablespace or database configuration.
- Change anything in the configuration or organization of a database or tablespace.

Appendix B: Troubleshooting

This section contains the following topics:

[Debug Methods](#) (see page 71)

[Job Status Information](#) (see page 73)

[BACKINT Job Status](#) (see page 74)

[Using RMAN Command to Backup, Restore, and Recover Archived Logs](#) (see page 74)

[Unable to Access Archived Logs in Oracle Cluster Environment](#) (see page 76)

[ORA-12546: TNS: permission denied](#) (see page 77)

Debug Methods

When troubleshooting the Enterprise Option for SAP R/3 for Oracle, we recommend that you generate and view a debugging trace file. The following sections describe how to enable debugging for the option, the backup agent integration module (BACKINT), and the Oracle Recovery Manager.

Enable Debugging for the Backup Option Integration Module

The option supports the creation of a debugging log for troubleshooting the backup option integration module (BACKINT). Debugging is disabled by default.

Important! Be very careful when making changes to the Windows Registry. Improper entries can affect the functionality of the product and the operation of your computer.

To enable debugging for the backup option integration module

1. On the Windows Start menu, click Run.
The Run dialog opens.
2. In the Open field, enter:
`regedit`
3. Click OK.
The Registry Editor window opens.
4. In the tree view pane, expand the following folders to view this registry path:
`SOFTWARE\ComputerAssociates\CA ARCserve Backup
DSAgent\Current\Version\BACKINT`
5. Double-click the debug entry in the Name list.
The Edit String dialog opens.
6. In the Open field, change the debug value from 0 (debugging disabled) to 1 (debugging enabled). By default, the debugging trace file is created in the installed option home directory.
7. Click OK.
8. If you want the debugging trace file to be created in a different directory, follow these steps, otherwise, continue with Step 9.
 - Double-click the traceDir entry in the Name list. The Edit String dialog opens.
 - In the Open field, enter the complete path name for the directory where you want the BACKINT trace file to be created.
 - Click OK.
9. Close the Registry Editor.

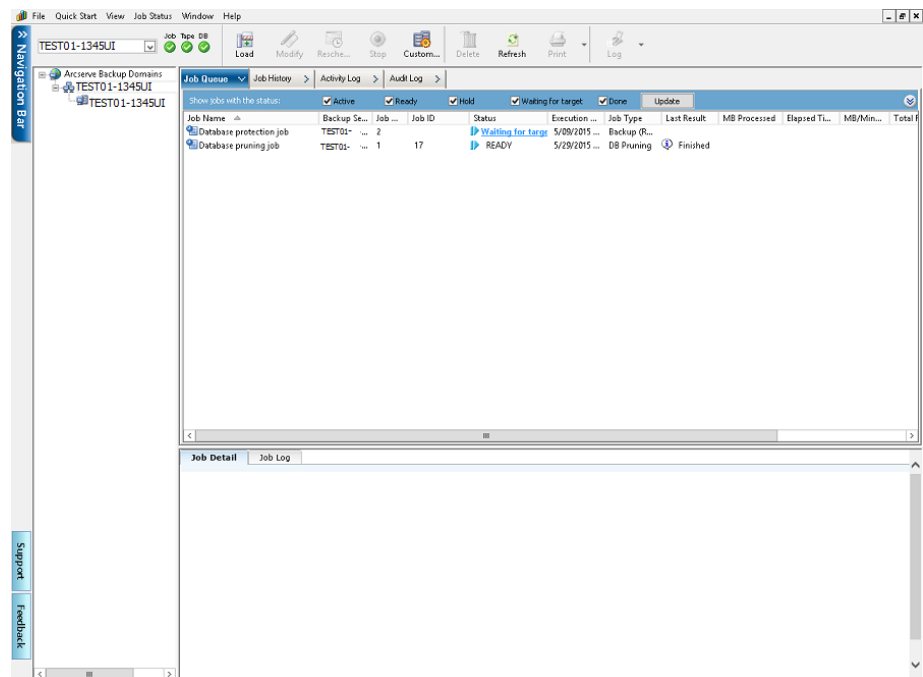
Important! Be sure to set the key entry back to 0 (disabled) when you have finished troubleshooting to prevent the needless consumption of disk space and CPU time by the creation and maintenance of a debugging file.

Job Status Information

When you use the option to back up or restore a database, you can view the status of the job.

To monitor the Job Activity

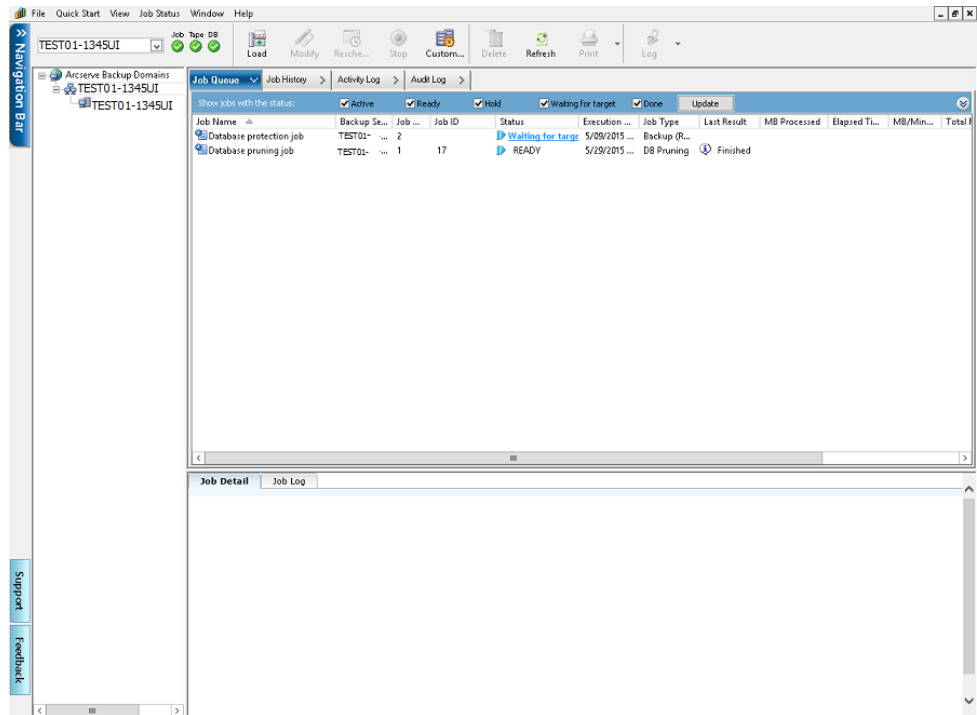
1. Click the Job Status icon in the Arcserve Backup Quick Start window.
2. After you submit a backup or restore job to Arcserve Backup by the option, you can monitor the status of the job using the Job Status Manager:



For more information about the Job Status Manager, see the *Administration Guide* and the *Implementation Guide*.

BACKINT Job Status

After a backup or restore job is submitted to Arcserve Backup by BACKINT, you can monitor the status of the job from the Arcserve Backup Job Queue window. The option backup ID is used to identify the backup job in the Job Queue window, and is displayed in the owner field.



Using RMAN Command to Backup, Restore, and Recover Archived Logs

You can perform the backup, restore and recovery operations for the archived logs using the advanced RMAN command, if you do not want to change the database settings in the RAC environment or unable to map to a computer the network.

However, ensure that you put the archived logs on a shared disk or use multiple archived logs destination or map each computer to the network so that they can access the archived logs on all other computers.

Assuming that there are three computers ORA-RAC1, ORA-RAC2 and ORA-RAC3 in the RAC environment, perform the backup and recovery operations using the advanced RMAN scripts.

To perform backup, restore and recovery processes in RAC environment

1. Open command prompt on ORA-RAC1.
2. Execute the command

```
RMAN target sys/oracle@RAC1 catalog <catalog owner name>/<password of owner>@<catalog database>
```

3. Run RMAN scripts to perform the backup and restore processes.

- Run the following RMAN script to backup the archived logs.

```
RUN
{
  ALLOCATE CHANNEL C1 DEVICE TYPE SBT;
  ALLOCATE CHANNEL C2 DEVICE TYPE SBT CONNECT sys/oracle@RAC2;
  ALLOCATE CHANNEL C3 DEV1 DEVICE TYPE SBT CONNECT sys/oracle@RAC3;
  SQL 'ALTER SYSTEM ARCHIVE LOG CURRENT';
  BACKUP ARCHIVELOG ALL;
}
```

- Run the following RMAN script to restore the archived logs.

```
RUN
{
  ALLOCATE CHANNEL C1 DEVICE TYPE SBT;
  ALLOCATE CHANNEL C2 DEVICE TYPE SBT CONNECT sys/oracle@RAC2;
  ALLOCATE CHANNEL C3 DEVICE TYPE SBT CONNECT sys/oracle@RAC3;
  RESTORE ARCHIVELOG ALL;
}
```

OR

```
RUN
{
  ALLOCATE CHANNEL C1 DEVICE TYPE SBT;
  ALLOCATE CHANNEL C2 DEVICE TYPE SBT CONNECT sys/oracle@RAC2;
  ALLOCATE CHANNEL C3 DEVICE TYPE SBT CONNECT sys/oracle@RAC3;
  RESTORE ARCHIVELOG FROM LOGSEQ 1 UNTIL LOGSEQ 10 THREAD 1;
  RESTORE ARCHIVELOG FROM LOGSEQ 1 UNTIL LOGSEQ 15 THREAD 2;
  RESTORE ARCHIVELOG FROM LOGSEQ 1 UNTIL LOGSEQ 20 THREAD 3;
}
```

Important! Before running the RMAN command for recovery, you must copy all the Archive Logs from ORA-RAC2 and ORA-RAC3 to the Archive Logs destination of RAC1 on ORA-RAC1.

More information:

[Unable to Access Archived Logs in Oracle Cluster Environment](#) (see page 76)

Unable to Access Archived Logs in Oracle Cluster Environment

Symptom

In Oracle cluster environment, after configuring the archive logs on a local disk, the Arcserve Backup Agent for Oracle is not accessing the archived logs on other computers in the cluster.

Solution

If you want to access the archived logs on a computer in the network, ensure that you put the logs on a shared disk or map to the network as the Oracle service is running on a local disk.

To map a machine to the network to access archived logs

1. Go to <http://technet.microsoft.com/en-us/sysinternals/bb897553.aspx> and download psexec.exe utility.

The utility is downloaded.

2. Open command prompt and go to the directory which contains the psexec.exe utility.
3. Execute the following command:

```
psexec.exe -s cmd
```

4. Then execute the following command to connect to the network:

```
net use X: \\ORA-RAC1\C$\ /PERSISTENT:YES
```

You can now map Y: and Z: drives to the network.

Note: If you are unable to map to the network, then you can perform the backup, restore and recovery operations using the advanced RMAN commands.

More information:

[Using RMAN Command to Backup, Restore, and Recover Archived Logs](#) (see page 74)

ORA-12546: TNS: permission denied

Symptom

I get the error *ORA-12546: TNS:permission denied* when I try logging into Oracle from the Arcserve Backup Manager.

Solution

This is a Oracle code defect. This may occur when Oracle version is 9.2.0.1. Apply the Oracle patch set 9.2.0.8.

Appendix C: Disaster Recovery Scenarios

This section contains the following topics:

[Scenarios for Restoring to the Original Windows Server](#) (see page 79)

[Scenarios for Restoring to an Alternate Server](#) (see page 82)

Scenarios for Restoring to the Original Windows Server

Assume you have a Windows server running Oracle, and that there are two Oracle database instances on the server: ORCL and ORA. A disaster occurs and it is necessary to rebuild the entire server.

Recovery of your Oracle databases proceeds in two phases, each of which is explained in detail in the following sections:

- Phase 1 - Recover the ORCL database
- Phase 2 - Recover the ORA database

Recover the ORCL Database

You must create an Oracle instance before you start the recovery procedure. Because you had the starter database (ORCL) when reinstalling Oracle, we recommend that you create the instance for ORA.

To recover the ORCL database

1. Reinstall Windows.
2. Install Arcserve Backup if it was on the same server as your Oracle databases.
3. Do **one** of the following:
 - Reinstall Oracle
 - Restore all necessary sessions (files) from media (for example, sessions for Oracle executables, configuration files and registry information)
4. Reinstall the option, and create an Oracle database instance entry for **each** of the instances you intend to restore.
5. Restore the last full backup of ORCL.

Note: If it is an offline backup, then no further recovery is needed. Proceed to [Recover the ORA Database](#) (see page 81). If it is an online backup, continue with the next step.

6. Check the initorcl.ora file to see if it contains all the necessary settings for the following entries:

```
LOG_ARCHIVE_START  
LOG_ARCHIVE_DEST  
LOG_ARCHIVE_FORMAT
```

7. Copy the restored control file (CONTROL.ORCL) from the option home directory to all necessary directories and rename this file with the appropriate name.
8. Connect to ORCL as user SYSTEM.
9. Mount the database.
10. Enter the following command at the SQL*Plus prompt:

```
recover database using backup controlfile until cancel;
```

11. When the recovery has been completed, enter the following command:

```
alter database open resetlogs
```

Note: If the database does not open and a message reports on the status of the redo logs, enter the following query at the SQL*Plus prompt:

```
select * from v$logfile
```


This query returns, among other information, the directory structure in which Oracle looks for the redo logs. If the directory structure does not exist, create it. When you have done so, enter the following command again:

```
alter database open resetlogs
```

Oracle should open the database and recreate the redo logs.

Important! The following step is very important. DO NOT OMIT IT.

12. Delete all archive logs for ORCL.

The ORCL database is now fully recovered. You can now proceed to the second phase, recovering the ORA database.

Recover the ORA Database

Use the following procedure to recover the ORA database.

To recover the ORA database

1. Create an instance for the ORA database and start the ORA instance.
2. Make sure the INITORA.ORA file contains all the necessary configuration information, as described in Step 6 of the previous phase. Do one of the following:
 - Restore the latest backup copy of the INITORA.ORA file from media.
 - Recreate this file by using INITORCL.ORA as your template and making all the necessary changes to it.
3. Restore the last full backup of ORA.

Note: If it is an offline backup, then no further recovery is needed. You have now completed recovery of your Oracle server.

4. Copy the restored control file (CONTROL.ORA) from the option home directory to all necessary directories and rename it with the appropriate name.
5. Connect to the instance you started in Step 1 of this procedure.
6. To mount the ORA database, enter the following command:

```
startup mount pfile=DRIVE:\PATH\initORA.ora
```

7. Enter the following command at the SQL*Plus prompt:

```
recover database using backup controlfile until cancel;
```

8. When the recovery has been completed, enter the following command:

```
alter database open resetlogs
```

If the database does not open and a message reports on the status of the redo logs, enter the following query at the SQL*Plus prompt:

```
select * from v$logfile
```

This query returns, among other information, the directory structure in which Oracle looks for the redo logs. If the directory structure does not exist, create it. When you have done so, enter the following command again:

```
alter database open resetlogs
```

Oracle should open the database and recreate the redo logs.

9. Delete all archive logs for ORA. The ORA database is now fully recovered.
10. (Optional) You can recreate an instance for ORA using the oradim utility (for example, oradim.exe). The syntax is:

```
oradim -new -sid SID -srv ServiceName -intpwd Password -startmode auto | manual -pfile  
FullPathToOracleInitSIDFile
```

11. (Optional) Create the password file if necessary, using the orapwd.exe utility.

Scenarios for Restoring to an Alternate Server

For faster disaster recovery, you may prefer restoring the Oracle database to a different server than the original server. In this section, we present scenarios as examples for restoring to alternate servers:

- Scenario 1 - The alternate server can support the exact directory structures of the original Oracle server.
- Scenario 2 - The alternate server cannot support the exact directory structures of the original Oracle Server. For example, the destination server does not have a volume (such as drive f:) that the original server had.
- Scenario 3 - Restore to an alternate location using the SAP BACKINT agent.

Restore to a Server that Supports Exact Directory Structures

You can restore to an alternate server that can support the exact directory structure, follow these steps:

To restore to a server that supports the exact directory structures

1. Install the option on the target server, and add an additional database instance for the new database that you want to recover.
2. Create an ORACLE instance or PWFIL if necessary.
3. In the Arcserve Backup Restore Manager, clear the Restore to Original Location option.
4. Restore all necessary recovery files (for example, configuration files) to the original location on the target server.
5. Restore the database to the target's temporary directory (the temporary directory is where you would like to keep the files—database files, archive logs, and control files).
6. Move database files and archive logs to their original location on the target server.
7. Copy the restored control file (CONTROL%SID%) to all necessary directories and rename it with the appropriate name.
8. After the database files are restored, you can follow the same steps for recovering the Oracle database as described in [Recover the ORCL Database](#) (see page 80).

Restore to an Alternate Server that Cannot Support Exact Directory Structures

You can restore to an alternate server that cannot support the exact directory structure by following these steps:

To restore to an alternate server that cannot support exact directory structures

1. Install the option on the target server, and add an additional Oracle database instance for the new database that you want to recover.
2. Create an ORACLE instance or PWFIL if necessary, as described in [Recover the ORCL Database](#) (see page 80).
3. In the Arcserve Backup Restore Manager, clear the Restore to original location option.
4. Restore all necessary recovery files (for example, configuration files) to a new location on the target server.
5. Restore the database to the target's temporary directory (the temporary directory is where you would like to keep the files—database files, archive logs, and control files).
6. Move database files and archive logs to their new location on the target server.
7. Edit the INITSID.ORA to reflect your new directory structure. Because the directory structures are different from the original, the control files must be recreated.
8. Start up the instance but **do not mount or open** the database.
9. Connect to the instance.
10. Execute the following command:

```
Startup nomount
```

11. Issue the create control file command.

For the exact syntax, see the Oracle Administrators Guide. An example might be:

```
create controlfile
set database TEST
logfile group 1('e:\oracle\test\redlog1a.ora') size 200K,
group 2('e:\oracle\test\redlog1b.ora') size 50K
RESETLOGS
datafile 'e:\oracle\test\sysstest.ora' size 10M,
'e:\oracle\test\testrollback.dbs' size 2M
maxlogfiles 50
maxlogmembers 3
maxdatafiles 200
maxinstances 6
archivelog;
```

Note: The user has specified the RESETLOGS and ARCHIVELOG options.

12. Ensure that the control file is copied to all necessary locations and renamed with the appropriate name.

13. Enter the following command:

Recover database using backup controlfile until cancel;

14. When the recovery is complete, enter the following command:

Alter database open resetlogs

This action recreates the redo logs and opens the database. If you get an error, check the previous section.

15. Delete the archive logs.

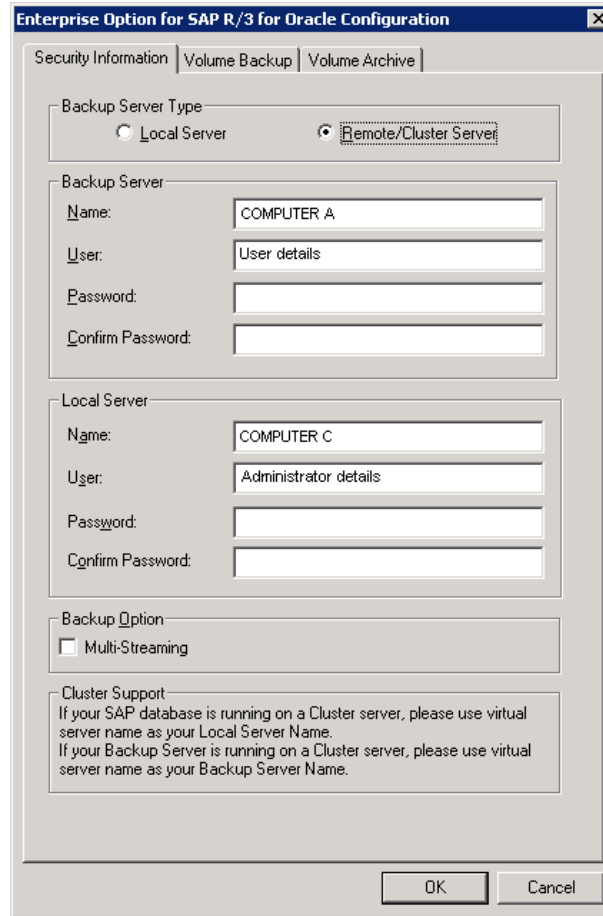
Restore Data to an Alternative Server Using the SAP BACKINT Agent

You can restore to an alternate location using the SAP BACKINT agent using the Arcserve Backup server. You must install the Arcserve Backup on Computer A and the SAP options on Computer B and Computer C.

To restore data to an alternate server using the SAP BACKINT agent

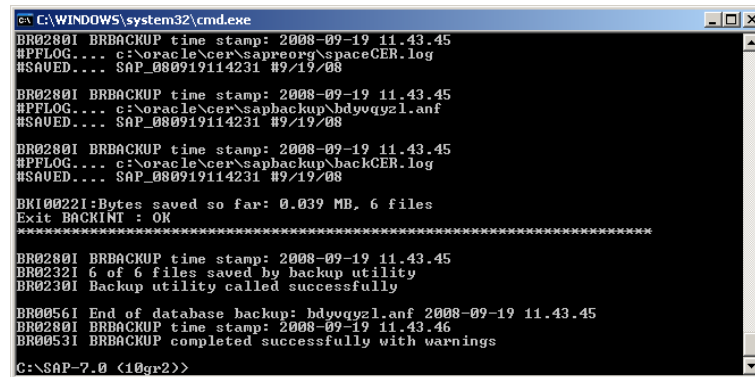
1. Install the Arcserve Backup server component on Computer A.
2. Install the Arcserve Backup Enterprise Option for SAP R/3 for Oracle on Computer C.
3. From the Windows Start menu, click Start, All Programs, CA, ARCserve Backup and click SAP R3 Oracle Option BACKINT Configuration on Computer C.
Enterprise Option for SAP R/3 for Oracle Configuration dialog opens.
4. Enter the Arcserve Backup name as Computer A and other details on the Enterprise Option for SAP R/3 for Oracle Configuration dialog.
5. Install Enterprise Option for SAP R/3 for Oracle and Client Agent on the Computer B.

- Enter the Backup Server Name as Computer A in the Enterprise Option for SAP R/3 for Oracle Configuration dialog to configure the agent and server.



- Create a temporary folder SAPRestore under the C: Drive on the Computer B.
- Run brbackup.exe -d util_file -t online -m all on Computer C to back up full database.

The backup process is complete.



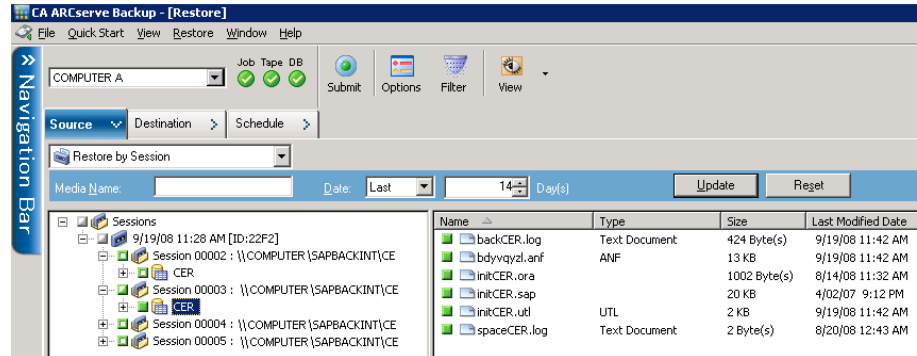
- Run brarchive -d utl_file -s on Computer C to back up archived logs.

The archive logs are backed up.

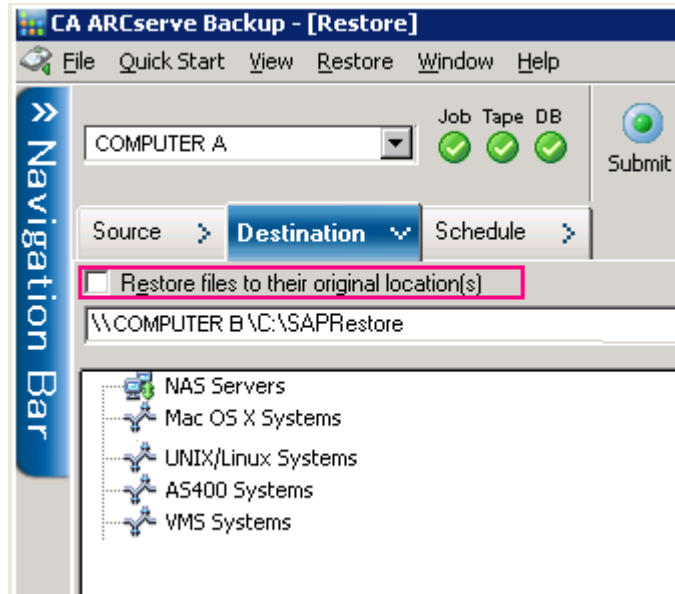
- You must shutdown the CER database on Computer B.

- On the Restore Manager on Computer A, select Source, Restore by Session, and select the session, backed up in the step 8, containing the Configuration Files and Backup History Files of the Option.

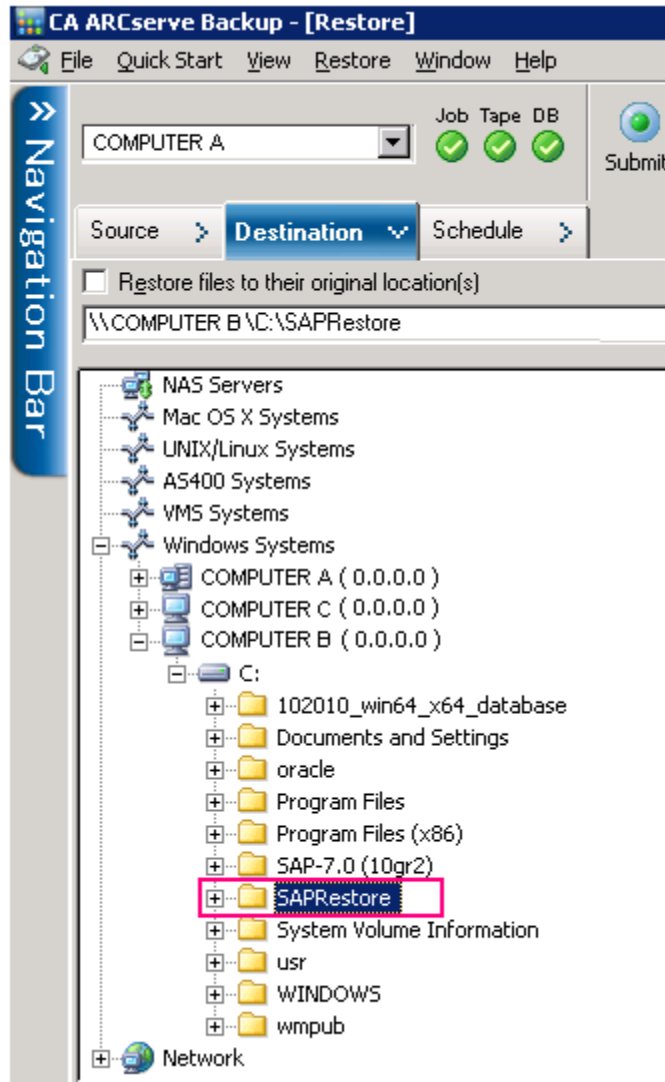
The files are selected.



- Select Destination and clear Restore files to their original location(s) option.



13. Add Computer B under the Windows Systems. Browse the Computer B, and select the temporary folder SAPRestore.



14. Click Submit and start the restore process.

The restore process is complete.

15. On the Restore Manager on Computer A, select Source, Restore by Session and select the session, backed up in the step 9, containing the Configuration Files and Backup History Files of the Option.

Select destination and clear Restore files to their original location(s) option.

16. Add Computer B under the node Windows Systems. Browse the Computer B, and select the temporary folder SAPRestore.

17. Click Submit on the toolbar to submit the restore job.

18. Open the temporary folder to view the directory hierarchy. The directory hierarchy has *cer* as the directory of SAP Software, while *product* is the directory of Oracle Software and Oracle Home.
19. You must now navigate the directory
“C:\SAPRestore\product\10.2.0\db_1\database for the following files:
 - *initCER.ora* — The init file of Oracle Database CER.
 - *initCER.sap* — The configuration file of SAP.
 - *initCER.util* —The configuration of SAP Agent which meets the requirement of SAP BACKINT.
20. Copy all the files except *initCER.utl* to the folder C:\ product\10.2.0\db_1\database to the Computer B. *InitCer.utl* is created automatically by BACKINT Configuration option.
21. Navigate the directory C:\SAPRestore\cer\sapbackup for the database backup history files of SAP and copy them to the folder C:\cer\sapbackup, which is the SAP Software on Computer B.
22. Navigate the directory C:\SAPRestore\cer\saparch for the Archived Logs backup history files of SAP and copy them to the folder C:\cer\saparch, which is the SAP Software on Computer B.
23. Navigate the directory C:\SAPRestore\cer\sapreorg and copy the *spaceCer.log* file to the folder C:\cer\sapreorg, which is the SAP Software on the Computer B.
24. On Computer B, run `brrestore -d util_file -b last -m 0` to restore the Control File.
The Control file is restored.
25. On Computer B, execute the `brrestore.exe -d util_file -b last -m all` to restore the Control File.
The Control file is restored.
26. On Computer B, execute the `brrestore.exe -d util_file -a 1-152` to restore the Archived Logs. The Sequence number (1-152) depends on what it generated when back up.
The archive logs are restored.
27. Log into the Database on the Computer B and start up the database to mount and recover it.
28. Verify if the data is the same as the one on Computer C to complete the restore process.

Appendix D: Sample util_par_file and Parameter Definitions

This section contains the following topics:

[Description for a Sample Backup Option Integration Module \(BACKINT\)](#) (see page 91)

Description for a Sample Backup Option Integration Module (BACKINT)

This appendix provides descriptions for a sample backup option integration module (BACKINT) parameter file util_par_file. You can find the file in the \$ORACLE_HOME\database directory.

- [Sample file](#) (see page 91)
- [Parameter Definitions](#) (see page 93)

Sample File

```
-- par_file ( initOR2.utl )--
#####
# This is the parameter file of BACKINT for Arcserve Backup containing parameters that determine the backup
# procedure.#
# BACKINT reads this file and submits a job to the Arcserve Backup queue for execution.
#
#Instructions for filling out each line start with a pound sign (#) and precede the actual information line that the user
# needs to fill in.#
#####
# Tape Name that Arcserve Backup should use for the backup (eg. tape0, tape1,..., or '*')
# DESTAPE=*
# Group Name that Arcserve Backup should use for the backup (eg. GROUP0, GROUP1,..., or '*')
# DESTGROUP=*
# First Tape Option that Arcserve Backup should use for the backup (eg. APPEND or OVERWRITE)
# APPEND: Append job sessions to the selected tape
# OVERWRITE: Overwrite any tape found in the drive only for the first BACKINT call
# TAPEMETHOD=APPEND
# volumes for brarchive/brbackup
# [volume_name | volume_name_list | SCRATCH]
# no default
# volume_archive_line = 2
# volume_archive1 = XXLA01, XXLA02, XXLA03, XXLA04, XXLA05
# volume_archive2 = XXLA06, XXLA07, XXLA08, XXLA09, XXLA10
```

```
# volume_backup_line = 2
# volume_backup1 = XXL01, XXL02, XXL03, XXL04, XXL05
# volume_backup2 = XXL06, XXL07, XXL08, XXL09, XXL10
# expiration period for backup volumes in days
# default: 0
# expir_period = 30
#####
Login information for communication with Arcserve Backup on remote server
#####
[Remote]
REMOTE_FLAG = 0
LOCAL_COMPUTER_NAME=Local_Server
LOCAL_USER_NAME=Local_User
LOCAL_PASSWORD=t
REMOTE_COMPUTER_NAME=Remote_CA ARCserve Backup_Server
REMOTE_USER_NAME=Remote_CA ARCserve Backup_User
REMOTE_PASSWORD=t
#####
Automatic Volume Management for brbackup
#####
[Volume Brbackup]
DESTGROUP=*
DETTAPE=*
TAPEMETHOD=APPEND
VOLUME_BACKUP_LINE=0
EXPIR_PERIOD=0
#####
Automatic Volume Management for brarchive
#####
[Volume Brarchive]
DESTGROUP=*
DETTAPE=*
TAPEMETHOD=APPEND
VOLUME_ARCHIVE_LINE=0
EXPIR_PERIOD=0
[Internal]
first_call_tape_name=none
first_call_group_name=none
```

Parameter Definitions

The util_par_file configuration file is divided into several sections. The parameters for each section are described in the following sections of this guide.

- [Remote Section](#) (see page 93)
- [Volume Brbackup Section](#) (see page 93)
- [Volume Brarchive Section](#) (see page 94)
- [Internal Section](#) (see page 94)

Remote Section

This section stores the Windows security information for the local server so it can communicate with Arcserve Backup on a remote server.

```
[Remote]
REMOTE_FLAG=Arcserve Backup type
LOCAL_COMPUTER_NAME=Local server name
LOCAL_USER_NAME=Local user name
LOCAL_PASSWORD=Local user password
REMOTE_COMPUTER_NAME=Remote Arcserve Backup server name
REMOTE_USER_NAME=Remote Arcserve Backup server user name
REMOTE_PASSWORD=Remote Arcserve Backup server user password
```

For example, if BACKINT integrates with Arcserve Backup running on a remote server, you must set the REMOTE_FLAG=1, in addition to specifying the other Windows security information. If BACKINT uses local Arcserve Backup, set REMOTE_FLAG=0, and do not set the other Windows security information.

Volume Brbackup Section

This section stores automatic volume management settings for BRBACKUP.

```
[Volume Brbackup]
DESTGROUP=Arcserve Backup device group name
DETTAPE=tape name
```

For example, if you use TAPE1 in GROUP0 for backup, set:

```
DESTGROUP=GROUP0
DETTAPE=TAPE1
```

If you use any available group or tape for backup, set:

```
DESTGROUP=*
DETTAPE=*
TAPEMETHOD=APPEND | OVERWRITE
```

The TAPEMETHOD can specify either APPEND or OVERWRITE. APPEND specifies that Arcserve Backup appends job sessions to the selected tape; OVERWRITE specifies that Arcserve Backup overwrites the selected tape for the first BACKINT call.

VOLUME_BACKUP_LINE=*number of lines*

VOLUME_BACKUPN=*tape names*

For example, if BRBACKUP uses TAPE1, TAPE2, TAPE3, TAPE4, TAPE5, TAPE6, TAPE7, TAPE8, TAPE9, and TAPE10 for backup sequentially, these lines should be:

VOLUME_BACKUP_LINE=2

VOLUME_BACKUP1=TAPE1, TAPE2, TAPE3, TAPE4, TAPE5

VOLUME_BACKUP2=TAPE6, TAPE7, TAPE8, TAPE9, TAPE10

EXPIR_PERIOD=*retention period in days*

Use the EXPIR_PERIOD parameter to define the number of days you want to prevent a tape from being overwritten.

For example, if you specify 10 days, BACKINT protects the tape from being overwritten for 10 days. This line should be:

EXPIR_PERIOD=10

For more information about the automatic volume management, see BCSAP Database Administrator: ORACLE.

Volume Brarchive Section

This section stores automatic volume management settings for BRARCHIVE.

[Volume Brarchive]

DESTGROUP=Arcserve Backup device group name

DESTTAPE=*tape name*

TAPEMETHOD=*first tape option*

VOLUME_ARCHIVE_LINE=*number of lines*

VOLUME_ARCHIVEN=*tape names*

EXPIR_PERIOD=*retention period in days*

The definitions in this section are the same as those in the previous section.

Internal Section

This section contains no user-configurable settings. Do not delete or modify this section.

Glossary

ACL

An ACL (Access Control List) lets you identify the specific Arcserve Backup servers permitted to back up the Oracle database.

Agent Admin interface

The Agent Admin interface is a component of the Arcserve Backup Client Agent for Windows and is used (in addition to other tasks) to create Access Control Lists (ACLs). ACLs allow you to identify the specific remote Arcserve Backup servers permitted to back up the Oracle database.

backup option integration module

The Backup Option Integration Module

disaster recovery

Disaster recovery is a backup and recovery process used to protect computing environments against the loss of data caused by a catastrophic events or natural disasters.

GL_Arcserve Universal Agent

The Arcserve Universal Agent is a Windows service that lets the agent support remote backups and restores of the Oracle database.

offline backup

An offline backup is a backup that is run while the database is offline. This type of backup is usually faster, but does require exclusive access to the database.

online backup

An online backup is a backup that is run on a database that is online. Online backups reduce database downtime, but still allow other connections to the database while the backup is occurring.

RMAN

RMAN (Oracle Recovery Manager) is an Oracle utility for backing up, restoring, and recovering Oracle databases. During installation of Arcserve Backup, you have the option of installing support for RMAN so you can submit backup and restore jobs to Arcserve Backup by connecting to RMAN using either the command line or the Oracle Backup Manager user interface.

tablespace-level backup

Rather than backing up a complete database, you can back up individual database objects, such as tablespaces. A tablespace-level backup is a backup on either the Oracle system tablespace or a tablespace containing rollback segments.

Index

A

- Access Control Lists (ACLs), creating • 25
- agent
 - architectural overview • 10
 - backing up with
 - CA ARCserve Backup • 32, 34
 - SAPDBA • 52
 - backup diagram • 14
 - fail safe environment, backing up in • 35
 - features • 9
 - functional limitations • 27
 - integration with
 - Recovery Manager • 16
 - SAPDBA • 11
 - networking capabilities • 10
 - restore diagram • 15
 - restoring with • 39
 - SAPDBA • 57
- alternative server
 - restoring to • 41
- architecture of agent • 10
- archived redo log files
 - backing up with SAPDBA • 56
 - do not overwrite • 68
 - protecting • 68
 - restoring • 40, 41

B

- backing up
 - in an Oracle Fail Safe environment • 35
 - job status • 74
 - limitations • 27
 - recommended procedures • 67
 - when to initiate backups • 69
 - with SAPDBA • 52
- best practices • 67
- BRARCHIVE • 52
 - media management setting • 23
- BRBACKUP • 52
 - media management setting • 23
- BRRESTORE • 52

C

- control files, restoring • 39, 40

D

- data files, restoring • 40
- databases
 - backing up
 - with BR*Tools • 60
 - with CA ARCserve Backup • 32, 34
 - with SAPDBA • 53, 55
 - fail safe environment, backing up in • 35
 - ORA recovery • 81
 - Oracle recovery • 80
 - recovering
 - from full offline backup • 50
 - with control files • 48
 - with SAPDBA • 57
 - restoring
 - with Arcserve Backup • 40
 - with SAPDBA • 57
 - when to back up • 69
- debugging
 - for BACKINT • 72
- disaster recovery
 - restoring to alternate server • 82

F

- fail safe environment
 - backing up in • 35

I

- init<SID>.sap file
 - configuring • 25
 - location of • 25
- instance, defined • 10

J

- Job Queue, checking job status with • 74
- job status, checking • 74

L

- limitations • 27
- log files
 - backing up with SAPDBA • 56
 - do not overwrite • 68
 - protecting • 68

restoring • 40

M

media pool settings • 23

O

offline back ups

 recovering from full backups • 50
 with SAPDBA • 55

offline backups

 restoring from • 43
 with Arcserve Backup • 34

online backups

 with Arcserve Backup • 32
 with SAPDBA • 53

Oracle Fail Safe environment

 backing up in • 35

P

parameter definitions, util_par_file • 93

 See also util_par_file • 93

R

recovering

 complete database
 with control files • 48
 from offline full backups • 50
 ORA database • 81
 Oracle database • 80
 with SAPDBA • 57

Recovery Manager

 backup diagram • 17
 integration with the agent • 16
 restore diagram • 18

redo log files

 backing up with SAPDBA • 56
 do not overwrite • 68
 protecting • 68
 restoring • 40

restoring

 alternate server • 82
 basic concepts • 39
 from offline backups • 43
 job status • 74
 limitations • 27
 system tablespace • 43
 to an alternate server • 41

 with Arcserve Backup • 40

 with SAPDBA • 57

S

SAP R/3 integration with the agent • 11

SAPDBA

 backing up offline databases • 55

 backing up online databases • 53

 backing up with • 52

 backup diagram • 12

 capabilities with agent • 51

 functions • 52

 integration with the agent • 11

 menu options • 51

 modules • 52

 restore diagram • 13

 restoring databases • 57

scenarios for disaster recovery • 79

system tablespace, restoring • 40, 43

T

tablespaces

 restoring

 with Arcserve Backup • 40

 system, restoring • 40, 43

test environment, implementing • 68

troubleshooting • 71

U

util_par_file

 configuring parameters in • 23

 location of • 23

 parameter definitions • 93

 sample • 91